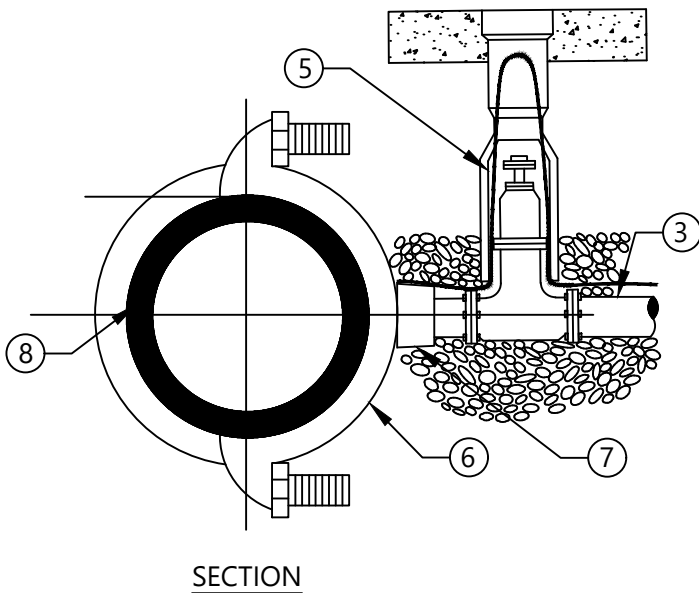
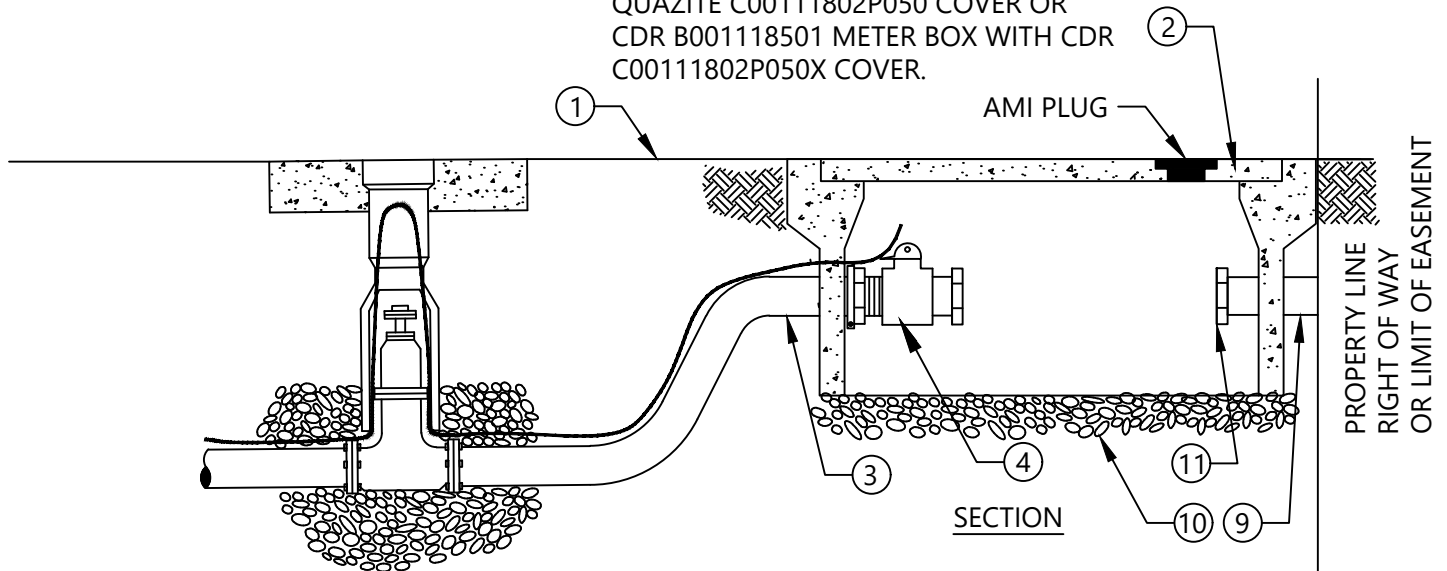


QUAZITE B001118501 METER BOX WITH
QUAZITE C00111802P050 COVER OR
CDR B001118501 METER BOX WITH CDR
C00111802P050X COVER.




NOTES:

1. TUBING UNDER ROADWAY SHALL BE ENCASED IN 4" P.V.C. PIPE SCHEDULE 40 MINIMUM AND EXTEND 4 FEET BEYOND THE EDGES OF PAVEMENT OR BACK OF CURB.

- ① FINISHED GRADE
- ② 17"X30' METER BOX AND PREDRILLED COVER WITH PLUG TO BE LOCATED INSIDE ROW @ PROPERTY LINE (LCU OWNED & MAINTAINED)
- ③ 2" POLYETHELENE TUBING, PE 3408, 200 PSI, SDR 9, BLUE (SEE APPROVED MATERIAL LIST) WITH LOCATING WIRE
- ④ STRAIGHT CURB STOP WITH PADLOCK WINGS CONNECTED TO LEE COUNTY WATER METER (SEE APPROVED MATERIAL LIST)
- ⑤ 2" GATE VALVE WITH OPERATIONAL NUT (SEE DETAIL G-01 OR G-02)
- ⑥ DOUBLE STRAP SERVICE SADDLE PROVIDE SPRING LOADED TAPPING SADDLE WHEN TAPPING HDPE (SEE APPROVED MATERIAL LIST)
- ⑦ BRASS NIPPLE (MAX 3" LONG)
- ⑧ WATER MAIN
- ⑨ PRIVATE SERVICE LINE
- ⑩ 2" OF 57 STONE
- ⑪ END OF LCU MAINTENANCE AT METER

NOT TO SCALE

		LEE COUNTY UTILITIES ENGINEERING <small>1500 MONROE STREET FORT MYERS, FLORIDA 33901</small>	
TITLE: WATER SERVICE INSTALL 1-1/2" THROUGH 2"			
REVISION: 12/18/24		DETAIL NO: W-06.dwg	