

WA-KE TRADITIONAL CAMP WEEK 1

IMPORTANT ANNOUNCEMENTS & REMINDERS

Sports Week

Southern Snoballs on Friday! **Cash Only:** \$3, \$5, and \$6

Make sure you check the lost & found every day!

**LOST &
FOUND**

**Monday
June 16**

Announcements
and Ice Breakers



**Tuesday
June 17**

Soccer Day
Wear a Soccer
Jersey



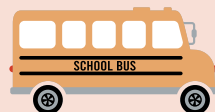
**Wednesday
June 18**

Baseball Day
Wear a Baseball
Jersey



**ALL CAMP FIELD
TRIP**

Mighty Mussel
Baseball
11 a.m.-3 p.m.



**Thursday
June 19**

All Sports Day
Wear Your Favorite
Jersey



**Friday
June 20**

Track and Field
Day



Southern Snoballs
12:45 p.m.



Camper of the Week
Raffle

- **Camp Hours** 7:30 a.m. - 6 p.m.
- Have questions? Refer to the "How to have a Perfect Week at Camp" document.
- Calendars are subject to change



CAMP DIRECTOR:

Nyell Philp | nphilp@leegov.com

WA-KE HATCHEE REC CENTER TRADITIONAL CAMP
(239) 533-6850

PERFECT WEEK AT TRADITIONAL CAMP

WA-KE HATCHEE WEEK 1

CAMPER DAILY'S

- Sunscreen
- Water Bottle
- A.M. Snack
- Lunch
- P.M. Snack
- Closed-toed Shoes (No Crocs)
- Bug Spray if needed

GUARDIAN DAILY'S

- Make sure to complete your Supplemental Form before Monday
- Have your photo ID ready at sign-out
- Phones and other electronics are not allowed.
 - Campers have access to the center phone whenever needed!

CAMP HOURS

- Camp Hours: 7:30 a.m.-6 p.m.
- Morning Snack: 9:15 a.m.
- Lunch: 11:30 a.m.-12:30 p.m.
- Afternoon Snack: 4 p.m.

SPECIAL EVENTS

- **ALL CAMP FIELD TRIP:** Might Mussels Baseball Game on Wednesday!
 - Wear your camp shirt
 - We will leave at 10:30 a.m. sharp!
 - Concession stand will be open, but the lines will be long so please bring lunch
- **NO WATER DAY THIS WEEK**

GUEST SPEAKERS

- None this Week!

REMINDERS

- **It's Sports Week!**
 - Check the Camp Calendar to see what to wear each day
- Write your camper's name on their items
- Check Lost & Found everyday!
- Pack a swimsuit, towel, change of clothes, and water shoes for water day next week!
- Southern Snoballs (Snow Cones)
 - Cash Only: \$3, \$5, or \$6



CAMPER SIGN-IN/OUT POLICY

A parent or guardian is required to sign in and sign out each camper daily. Only people who have previously been listed on the Supplemental Information Sheet will be permitted to sign for your child at pick up. Photo ID will be required. Changes must be submitted in writing.

WA-KE TRADITIONAL CAMP WEEK 2

IMPORTANT ANNOUNCEMENTS & REMINDERS

Spirit Week

Southern Snoballs on Friday! **Cash Only:** \$3, \$5, and \$6

Make sure you check the lost & found every day!

**LOST &
FOUND**

**Monday
June 23**

Announcements
and Ice Breakers



**Tuesday
June 24**

Crazy Hair Day



Lee County Library
Presentation
9 a.m.-11 a.m.



**Wednesday
June 25**

Wacky Wednesday
Come up with your
silliest outfit



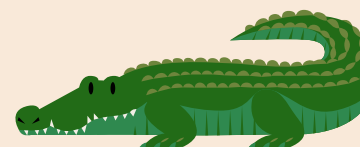
Water Day

**Thursday
June 26**

Twin Day
Match outfits with a
friend/counselor



Conservation 20/20
Greg Kosick
Presentation
9 a.m.-11:30 a.m.



**Friday
June 27**

Rainbow Day
Wear as many
colors as possible

Southern Snoballs
12:45 p.m.

COMMUNITY EVENT

Moore's Soul Food
Truck Friday!
Parents and the
Community Invited
5 p.m.

Camper of the Week
Raffle

- **Camp Hours** 7:30 a.m. - 6 p.m.
- Have questions? Refer to the "How to have a Perfect Week at Camp" document.
- Calendars are subject to change



CAMP DIRECTOR:

Nyell Philp | nphilp@leegov.com

WA-KE HATCHEE REC CENTER TRADITIONAL CAMP
(239) 533-6850

PERFECT WEEK AT TRADITIONAL CAMP

WA-KE HATCHEE WEEK 2

CAMPER DAILY'S

- Sunscreen
- Water Bottle
- A.M. Snack
- Lunch
- P.M. Snack
- Closed-toed Shoes (No Crocs)
- Bug Spray if needed

GUARDIAN DAILY'S

- Make sure to complete your Supplemental Form before Monday
- Have your photo ID ready at sign-out
- Phones and other electronics are not allowed.
 - Campers have access to the center phone whenever needed!

CAMP HOURS

- Camp Hours: 7:30 a.m.-6 p.m.
- Morning Snack: 9:15 a.m.
- Lunch: 11:30 a.m.-12:30 p.m.
- Afternoon Snack: 4 p.m.

SPECIAL EVENTS

- Water Day on Wednesday
 - Bring a towel, swimsuit, change of clothes, sunscreen, and water shoes
- **COMMUNITY EVENT:** Food Truck Friday!
 - Moore's Soul Food
 - Parents and Community invited
 - 5 p.m.

GUEST SPEAKERS

- Tuesday
 - Lee County Library Presentation
- Thursday - Greg Kosick
 - Conservation 20/20 Presentation

REMINDERS

- **It's Sports Week!**
 - Check the Camp Calendar to see what to wear each day
- Write your camper's name on their items
- Check Lost & Found everyday!
- Southern Snoballs (Snow Cones)
 - Cash Only: \$3, \$5, or \$6



CAMPER SIGN-IN/OUT POLICY

A parent or guardian is required to sign in and sign out each camper daily. Only people who have previously been listed on the Supplemental Information Sheet will be permitted to sign for your child at pick up. Photo ID will be required. Changes must be submitted in writing.

WA-KE TRADITIONAL CAMP WEEK 3

IMPORTANT ANNOUNCEMENTS & REMINDERS

Holiday Week

Southern Snoballs on Thursday! **Cash Only**: \$3, \$5, and \$6

Make sure you check the lost & found every day!

**LOST &
FOUND**

**Monday
June 30**

Announcements
and Ice Breakers



4H Presentation
Arielle Pierce
9:30 a.m.-11 a.m.

**Tuesday
July 1**

Halloween Day
Wear camp
appropriate costumes



**Wednesday
July 2**

Winter Holiday Day
Wear your favorite
holiday outfit



Water Day

**Thursday
July 3**

Happy 4th of July
Wear red, white and
blue



Southern Snoballs
12:45 p.m.



Camper of the Week
Raffle

**Friday
July 4**

NO CAMP



Have a safe and fun
holiday!



- **Camp Hours** 7:30 a.m. - 6 p.m.
- Have questions? Refer to the "How to have a Perfect Week at Camp" document.
- Calendars are subject to change



CAMP DIRECTOR:

Nyell Philp | nphilp@leegov.com

WA-KE HATCHEE REC CENTER TRADITIONAL CAMP
(239) 533-6850

PERFECT WEEK AT TRADITIONAL CAMP

WA-KE HATCHEE WEEK 3

CAMPER DAILY'S

- Sunscreen
- Water Bottle
- A.M. Snack
- Lunch
- P.M. Snack
- Closed-toed Shoes (No Crocs)
- Bug Spray

GUARDIAN DAILY'S

- Make sure to complete your Supplemental Form before Monday
- Have your photo ID ready at sign-out
- Phones and other electronics are not allowed. Campers have access to the center phone whenever needed! :)

CAMP HOURS

- Camp Hours: 7:30 a.m.-6 p.m.
- Morning Snack: 9:15 a.m.
- Lunch: 11:30 a.m.-12:30 p.m.
- Afternoon Snack: 4 p.m.

SPECIAL EVENTS

- Water Day on Wednesday
 - Bring a towel, swimsuit, change of clothes, sunscreen, and water shoes

NO CAMP ON FRIDAY, JULY 4!
HAVE A FUN AND SAFE HOLIDAY

GUEST SPEAKERS

- Monday - Arielle Pierce
 - 4H Youth Development Presentation

REMINDERS

- It's Holiday Week!
 - Check the Camp Calendar to see what to wear each day
- Write your camper's name on their items
- Check Lost & Found everyday!
- Southern Snoballs (Snow Cones)
 - Cash Only: \$3, \$5, or \$6



CAMPER SIGN-IN/OUT POLICY

A parent or guardian is required to sign in and sign out each camper daily. Only people who have previously been listed on the Supplemental Information Sheet will be permitted to sign for your child at pick up. Photo ID will be required. Changes must be submitted in writing.

WA-KE TRADITIONAL CAMP WEEK 4

IMPORTANT ANNOUNCEMENTS & REMINDERS

Around the World Week
Southern Snoballs on Friday! **Cash Only:** \$3, \$4, and \$6.
Make sure you check the lost & found every day!

**LOST &
FOUND**

**Monday
July 7**

Announcements
and Ice Breakers



**Tuesday
July 8**

Learn about Asia &
Oceania

Page Field
Presentation
Groups 9-13
9:30 a.m.-10:30 a.m.



**Wednesday
July 9**

Learn about
Europe



Water Day

**Thursday
July 10**

Learn about North
& South America



FIELD TRIP
Skyzone
9 a.m.-Noon

**Friday
July 11**

Learn about Africa

Southern Snoballs
12:45 p.m.



Camper of the Week
Raffle

- **Camp Hours** 7:30 a.m. - 6 p.m.
- Have questions? Refer to the "How to have a Perfect Week at Camp" document.
- Calendars are subject to change



CAMP DIRECTOR:

Nyell Philp | nphilp@leegov.com

WA-KE HATCHEE REC CENTER TRADITIONAL CAMP
(239) 533-6850

PERFECT WEEK AT TRADITIONAL CAMP

WA-KE HATCHEE WEEK 4

CAMPER DAILY'S

- Sunscreen
- Water Bottle
- A.M. Snack
- Lunch
- P.M. Snack
- Closed-toed Shoes (No Crocs)
- Bug Spray

GUARDIAN DAILY'S

- Make sure to complete your Supplemental Form before Monday
- Have your photo ID ready at sign-out
- Phones and other electronics are not allowed. Campers have access to the center phone whenever needed! :)

CAMP HOURS

- Camp Hours: 7:30 a.m.-6 p.m.
- Morning Snack: 9:15 a.m.
- Lunch: 11:30 a.m.-12:30 p.m.
- Afternoon Snack: 4 p.m.

SPECIAL EVENTS

- Water Day on Wednesday
 - Bring a towel, swimsuit, change of clothes, sunscreen, and water shoes
- **ALL CAMP FIELD TRIP:** SkyZone Trampoline Park on Thursday!
 - Wear your camp shirt
 - Arrive to camp by **8 a.m.**

GUEST SPEAKERS

- Tuesday
 - Page Field Airport Presentation
 - Only for Groups 9-13

REMINDERS

- **It's Around the World Week!**
- Write your camper's name on their items
- Check Lost & Found everyday!
- Southern Snoballs (Snow Cones)
 - Cash Only: \$3, \$5, or \$6



CAMPER SIGN-IN/OUT POLICY

A parent or guardian is required to sign in and sign out each camper daily. Only people who have previously been listed on the Supplemental Information Sheet will be permitted to sign for your child at pick up. Photo ID will be required. Changes must be submitted in writing.

WA-KE TRADITIONAL CAMP WEEK 5

IMPORTANT ANNOUNCEMENTS & REMINDERS

Adventure Week

Southern Snoballs on Friday! **Cash Only:** \$3, \$4, and \$6.

Make sure you check the lost & found every day!

**LOST &
FOUND**

**Monday
July 14**

Announcements
and Ice Breakers



Talent Show Practice



**Tuesday
July 15**

Olympic Games Day



Public Safety
Presentation

Daniela Rambhajan
9 a.m.-10:30 a.m.



Talent Show Practice

**Wednesday
July 16**

Survivor Games Day



Talent Show Practice

**Thursday
July 17**

Obstacle Course Day



Southern Snoballs
12:45 p.m.



Talent Show Practice

**Friday
July 18**



TALENT SHOW

Parents are invited!

3 p.m.



Camper of the Week
Raffle

- **Camp Hours** 7:30 a.m. - 6 p.m.
- Have questions? Refer to the "How to have a Perfect Week at Camp" document.
- Calendars are subject to change



CAMP DIRECTOR:

Nyell Philp | nphilp@leegov.com

WA-KE HATCHEE REC CENTER TRADITIONAL CAMP
(239) 533-6850

PERFECT WEEK AT TRADITIONAL CAMP

WA-KE HATCHEE WEEK 5

CAMPER DAILY'S

- Sunscreen
- Water Bottle
- A.M. Snack
- Lunch
- P.M. Snack
- Closed-toed Shoes (No Crocs)
- Bug Spray

GUARDIAN DAILY'S

- Make sure to complete your Supplemental Form before Monday
- Have your photo ID ready at sign-out
- Phones and other electronics are not allowed. Campers have access to the center phone whenever needed! :)

CAMP HOURS

- Camp Hours: 7:30 a.m.-6 p.m.
- Morning Snack: 9:15 a.m.
- Lunch: 11:30 a.m.-12:30 p.m.
- Afternoon Snack: 4 p.m.

SPECIAL EVENTS

- Water Day on Wednesday
 - Bring a towel, swimsuit, change of clothes, sunscreen, and water shoes
- **FAMILY EVENT:** Talent Show on Friday!
 - Campers who are participating will be practicing all week long to prepare!
 - Family and friends are invited
 - 3 p.m.

GUEST SPEAKERS

- Tuesday - Daniela Rambhajan
 - Public Safety Presentation

REMINDERS

- **It's Adventure Week!**
 - Make sure to wear comfortable clothing
- Write your camper's name on their items
- Check Lost & Found everyday!
- Southern Snoballs (Snow Cones)
 - Cash Only: \$3, \$5, or \$6

CAMPER SIGN-IN/OUT POLICY

A parent or guardian is required to sign in and sign out each camper daily. Only people who have previously been listed on the Supplemental Information Sheet will be permitted to sign for your child at pick up. Photo ID will be required. Changes must be submitted in writing.



WA-KE TRADITIONAL CAMP WEEK 6

IMPORTANT ANNOUNCEMENTS & REMINDERS

Board Game Week

Southern Snoballs on Friday! **Cash Only:** \$3, \$4, and \$6.

Make sure you check the lost & found every day!

**LOST &
FOUND**

**Monday
July 21**

Announcement
and Ice Breakers

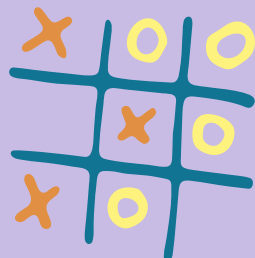


**FOSTER VILLAGE
CHARITY DRIVE WEEK!
BRING IN YOUR
DONATIONS FOR LOCAL
FOSTER CHILDREN!**



**Tuesday
July 22**

Giant Tic Tac Toe



Ranger Presentation
9 a.m.-11 a.m.



**Wednesday
July 23**

Life Sized
Four in a Row



Water Day

**Thursday
July 24**

Giant Hopscotch



Conservation 20/20
Presentation
Greg Kosick
9 a.m.-11 a.m.

**Friday
July 25**



FIELD TRIP
Lakes Park
Groups 1-4
9 a.m.-Noon

Southern Snoballs
12:45 p.m.



Camper of the Week
Raffle

- **Camp Hours** 7:30 a.m. - 6 p.m.
- Have questions? Refer to the "How to have a Perfect Week at Camp" document.
- Calendars are subject to change



CAMP DIRECTOR:

Nyell Philp | nphilp@leegov.com

WA-KE HATCHEE REC CENTER TRADITIONAL CAMP
(239) 533-6850

PERFECT WEEK AT TRADITIONAL CAMP

WA-KE HATCHEE WEEK 6

CAMPER DAILY'S

- Sunscreen
- Water Bottle
- A.M. Snack
- Lunch
- P.M. Snack
- Closed-toed Shoes (No Crocs)
- Bug Spray

GUARDIAN DAILY'S

- Make sure to complete your Supplemental Form before Monday
- Have your photo ID ready at sign-out
- Phones and other electronics are not allowed. Campers have access to the center phone whenever needed! :)

CAMP HOURS

- Camp Hours: 7:30 a.m.-6 p.m.
- Morning Snack: 9:15 a.m.
- Lunch: 11:30 a.m.-12:30 p.m.
- Afternoon Snack: 4 p.m.

SPECIAL EVENTS

- **FOSTER VILLAGE CHARITY DRIVE:**
 - Bring in your donations!
- Water Day on Wednesday
 - Bring a towel, swimsuit, change of clothes, sunscreen, and water shoes
- **FIELD TRIP:** Lakes Park on Friday!
 - Groups 1-4: Wear your camp shirt
 - 9 a.m.-Noon

GUEST SPEAKERS

- Tuesday
 - Lee County Park Ranger Presentation
- Thursday - Greg Kosick
 - Conversation 20/20 Presentation

REMINDERS

- **It's Board Game Week!**
 - Make sure to wear comfortable clothing
- Write your camper's name on their items
- Check Lost & Found everyday!
- Southern Snoballs (Snow Cones)
 - Cash Only: \$3, \$5, or \$6



CAMPER SIGN-IN/OUT POLICY

A parent or guardian is required to sign in and sign out each camper daily. Only people who have previously been listed on the Supplemental Information Sheet will be permitted to sign for your child at pick up. Photo ID will be required. Changes must be submitted in writing.

WA-KE TRADITIONAL CAMP WEEK 7

IMPORTANT ANNOUNCEMENTS & REMINDERS

Entertainment Week

Southern Snoballs on Thursday! **Cash Only:** \$3, \$4, and \$6.

Make sure you check the lost & found every day!

**LOST &
FOUND**

**Monday
July 28**

Announcements
and Ice Breakers



**WE'LL
MISS
YOU!**

**Tuesday
July 29**

Pajama Day



Calusa Blueway
Presentation
Mike Hammond
9 a.m.-11:30 a.m.

**Wednesday
July 30**

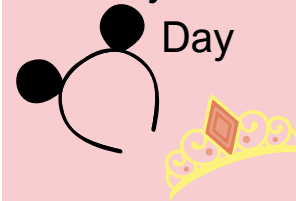
Career Day



Water Day

**Thursday
July 31**

Disney Dress Up
Day



FCGU ROCK
Presentation

9 a.m.-11:30 a.m.

FGCU

Southern Snoballs
12:45 p.m.



**Friday
August 1**

FIELD TRIP

Florida Repertory

Theatre

Peter Pan

11 a.m.



FLORIDA REP

Camper of the Week
Raffle

**HAVE A
GREAT
SCHOOL
YEAR!**

- **Camp Hours** 7:30 a.m. - 6 p.m.
- Have questions? Refer to the "How to have a Perfect Week at Camp" document.
- Calendars are subject to change



CAMP DIRECTOR:

Nyell Philp | nphilp@leegov.com

WA-KE HATCHEE REC CENTER TRADITIONAL CAMP
(239) 533-6850

PERFECT WEEK AT TRADITIONAL CAMP

WA-KE HATCHEE WEEK 7

CAMPER DAILY'S

- Sunscreen
- Water Bottle
- A.M. Snack
- Lunch
- P.M. Snack
- Closed-toed Shoes (No Crocs)
- Bug Spray

GUARDIAN DAILY'S

- Make sure to complete your Supplemental Form before Monday
- Have your photo ID ready at sign-out
- Phones and other electronics are not allowed. Campers have access to the center phone whenever needed! :)

CAMP HOURS

- Camp Hours: 7:30 a.m.-6 p.m.
- Morning Snack: 9:15 a.m.
- Lunch: 11:30 a.m.-12:30 p.m.
- Afternoon Snack: 4 p.m.

SPECIAL EVENTS

- Water Day on Wednesday
 - Bring a towel, swimsuit, change of clothes, sunscreen, and water shoes
- **ALL CAMP FIELD TRIP:** Florida Repertory Theatre Play on Friday!
 - Wear your camp shirt
 - Peter Pan
 - Please arrive by **10 a.m.**

HAVE A WONDERFUL SCHOOL YEAR!

GUEST SPEAKERS

- Tuesday - Mike Hammond
 - Calusa Blueway Presentation
- Thursday - PERSON NAME
 - FGCU R.O.C.K Presentation

REMINDERS

- **It's Entertainment Week!**
 - Check the Camp Calendar to see what to wear each day
- Write your camper's name on their items
- Check Lost & Found everyday!
- Southern Snoballs (Snow Cones)
 - Cash Only: \$3, \$5, or \$6



CAMPER SIGN-IN/OUT POLICY

A parent or guardian is required to sign in and sign out each camper daily. Only people who have previously been listed on the Supplemental Information Sheet will be permitted to sign for your child at pick up. Photo ID will be required. Changes must be submitted in writing.