

PINE ISLAND TRADITIONAL CAMP WEEK 1

Important announcements & reminders

Parents please apply sunscreen before you drop your camper off.
Bring water bottle, pack morning & afternoon snack & lunch everyday.
Wear closed toe shoes, No electronics

**Monday
June 16**

WELCOME

Get to know your
fellow campers

Ice Breakers



group game



**Tuesday
June 17**

Pine Island Pool
leave by 10:30 a.m.
bring water bottle,
towel, sunscreen
& \$1 for ice cream



**GUEST
SPEAKER**

2 p.m.



**Wednesday
June 18**

**GUEST
SPEAKER**



walking to Spots
after lunch
bring \$3-\$5



**Thursday
June 19**

Pine Island Pool
leave by 10:30 a.m.
bring water bottle,
towel, sunscreen
& \$1 for ice cream



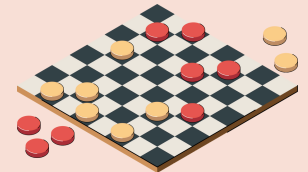
**Friday
June 20**

**GUEST
SPEAKER**

Mike Hammond
10 a.m.



Chess



- **Camp Hours** 7:30 a.m. - 6 p.m.
- Have questions? Refer to the "How to have a Perfect Week at Camp" document.
- Calendars are subject to change



CAMP DIRECTOR:

Tiffany Vance | TVance@leegov.com

PINE ISLAND TRADITIONAL CAMP

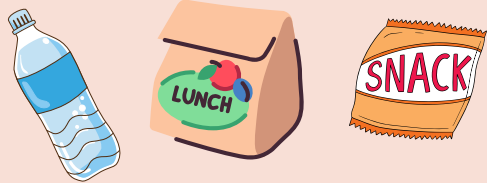
Phone Number

PERFECT WEEK AT PINE ISLAND ELEMENTARY

TRADITIONAL CAMP WEEK 1

GUARDIAN / CAMPER DAILY'S

- Parents/Guardians please read camp calendar and weekly email for any updates.
- Parents please send water bottle, morning & afternoon snack & lunch daily.



- Parents make sure to apply sunscreen on your child before dropping them off at camp.



CAMP HOURS

- Camp hours are 7:30 a.m. - 6 p.m. Monday through Friday
- Morning snack is at 8:30 a.m.
- Lunch is at 12 p.m.
- Afternoon snack is at 3:30 p.m.

SPECIAL EVENTS

- On Tuesday and Thursday at 10:30 a.m. we will walk to the Pine Island Pool. Campers please bring swimsuit, towel, sunscreen, and \$1 for ice cream.



- We will be walking to Spots Ice Cream Shoppe on Wednesday after lunch, please bring \$3-\$5.

GUEST SPEAKERS

- Tuesday we will have a special guest speaker from the Lee County Public Library at 2 p.m.
- Wednesday we will have a special guest speaker from Lee County Land Management at 10 a.m.
- Friday we will have a special guest speaker Mike Hammond at 10 a.m. who will talk about reptiles.

REMINDERS

- Parents please remember to write your campers name on their personal items.
- Parents please check our lost and found for any missing items.

CAMPER SIGN-IN/OUT POLICY

A parent or guardian is required to sign in and sign out each camper daily. Only people who have previously been listed on the Supplemental Information Sheet will be permitted to sign for your child at pick up. Photo ID will be required. Changes must be submitted in writing.



PINE ISLAND TRADITIONAL CAMP WEEK 2

Important announcements & reminders

Parents please apply sunscreen before you drop your camper off.
Bring water bottle, pack morning & afternoon snack & lunch everyday.
Wear closed toe shoes, No electronics

Monday
June 23

**GUEST
SPEAKER**

Matlacha/Pine
Island Fire
Department
10am

Build Together
Play Together
project



Tuesday
June 24

Pine Island Pool
leave by 10:30 a.m.
bring water bottle,
towel, sunscreen
& \$1 for ice cream



Wednesday
June 25

walking to Spots
after lunch
bring \$3-\$5



**GUEST
SPEAKER**

1:30 p.m.



Thursday
June 26

Pine Island Pool
leave by 10:30 a.m.
bring water bottle,
towel, sunscreen
& \$1 for ice cream



Friday
June 27

All camp field trip
leave by 9:30 a.m.
wear camp t-shirt



TOPGOLF

Having Lunch at
at Lakes Park



- **Camp Hours** 7:30 a.m. - 6 p.m.
- Have questions? Refer to the "How to have a Perfect Week at Camp" document.
- Calendars are subject to change



CAMP DIRECTOR:

Tiffany Vance | TVance@leegov.com

PINE ISLAND TRADITIONAL CAMP

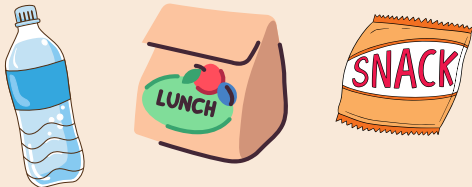
Phone Number

PERFECT WEEK AT PINE ISLAND ELEMENTARY

TRADITIONAL CAMP WEEK 2

GUARDIAN/CAMPER DAILY'S

- Parents/Guardians please read camp calendar and weekly email for any updates.
- Parents please send water bottle, morning & afternoon snack & lunch daily.



- Parents make sure to apply sunscreen on your child before dropping them off at camp.



CAMP HOURS

- Camp hours are 7:30 a.m. - 6 p.m. Monday through Friday
- Morning snack is at 8:30 a.m.
- Lunch is at 12 p.m.
- Afternoon snack is at 3:30 p.m.

SPECIAL EVENTS

- On Tuesday and Thursday at 10:30 a.m. we will walk to the Pine Island Pool. Campers please bring swimsuit, towel, sunscreen, and \$1 for ice cream.
- We will be walking to Spots Ice Cream Shoppe on Wednesday after lunch, please bring \$3-\$5.
- Friday there will be an all camp field trip to Top Golf and Lakes Park. We will leave by 9:30 a.m., please wear Camp T-Shirt.

GUEST SPEAKERS

- Wednesday 4H will be visiting us at 1:30 p.m.



REMINDERS

- Parents please remember to write your campers name on their personal items.
- Parents please check our lost and found for any missing items.

CAMPER SIGN-IN/OUT POLICY

A parent or guardian is required to sign in and sign out each camper daily. Only people who have previously been listed on the Supplemental Information Sheet will be permitted to sign for your child at pick up. Photo ID will be required. Changes must be submitted in writing.



PINE ISLAND TRADITIONAL CAMP WEEK 3

Important announcements & reminders

Parents please apply sunscreen before you drop your camper off.
Bring water bottle, pack morning & afternoon snack & lunch everyday.
Wear closed toe shoes, No electronics

**Monday
June 30**

**GUEST
SPEAKER**



Ranger Matt
10 a.m.

**GUEST
SPEAKER**

1pm



**Tuesday
July 1**

Pine Island Pool
leave by 10:30 a.m.
bring water bottle,
towel, sunscreen
& \$1 for ice cream



**Wednesday
July 2**

Arts and Crafts



walking to Spots
after lunch
bring \$3-\$5



**Thursday
July 3**

Pine Island Pool
leave by 10:30 a.m.
bring water bottle,
towel, sunscreen
& \$1 for ice cream



**Friday
July 4**

No Camp



- **Camp Hours** 7:30 a.m. - 6 p.m.
- Have questions? Refer to the "How to have a Perfect Week at Camp" document.
- Calendars are subject to change



CAMP DIRECTOR:

Tiffany Vance | TVance@leegov.com

PINE ISLAND TRADITIONAL CAMP

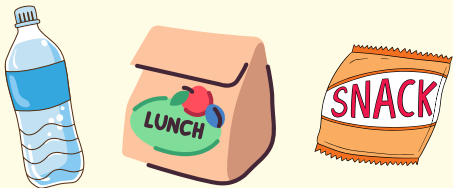
Phone Number

PERFECT WEEK AT PINE ISLAND ELEMENTARY

TRADITIONAL CAMP WEEK 3

GUARDIAN/CAMPER DAILY'S

- Parents/Guardians please read camp calendar and weekly email for any updates.
- Parents please send water bottle, morning & afternoon snack & lunch daily.



- Parents make sure to apply sunscreen on your child before dropping them off at camp.



CAMP HOURS

- Camp hours are 7:30 a.m. - 6 p.m. Monday through Friday
- Morning snack is at 8:30 a.m.
- Lunch is at 12 p.m.
- Afternoon snack is at 3:30 p.m.

SPECIAL EVENTS

- On Tuesday and Thursday at 10:30 a.m. we will walk to the Pine Island Pool. Campers please bring swimsuit, towel, sunscreen, and \$1 for ice cream.



- We will be walking to Spots Ice Cream Shoppe on Wednesday after lunch, please bring \$3-\$5.

GUEST SPEAKERS

- Monday we will have a visit from the Lee County Rangers at 10 a.m. for a butterfly presentation.
- Monday we will have a visit from the Gulf Coast Humane Society at 1 p.m.

REMINDERS

- **There will be no camp on Friday July 4**
- Parents please remember to write your campers name on their personal items.
- Parents please check our lost and found for any missing items.

CAMPER SIGN-IN/OUT POLICY

A parent or guardian is required to sign in and sign out each camper daily. Only people who have previously been listed on the Supplemental Information Sheet will be permitted to sign for your child at pick up. Photo ID will be required. Changes must be submitted in writing.



PINE ISLAND TRADITIONAL CAMP WEEK 4

Important announcements & reminders

Parents please apply sunscreen before you drop your camper off.
Bring water bottle, pack morning & afternoon snack & lunch everyday.
Wear closed toe shoes, No electronics

**Monday
July 7**

**GUEST
SPEAKER**

10 a.m.



Ping Pong



**Tuesday
July 8**

All camp field trip
Leave by 9 a.m.
wear camp t-shirt
pack a lunch



Lunch at Lakes Park
12:30 p.m.



**Wednesday
July 9**

Making friendship
bracelets



walking to Spots
bring \$3-\$5



**Thursday
July 10**

Pine Island Pool
leave by 10:30 a.m.
bring water bottle,
towel, sunscreen
& \$1 for ice cream



**Friday
July 11**

Kickball on large
field



Boardgames



Camp Movie
TBA



- **Camp Hours** 7:30 a.m. - 6 p.m.
- Have questions? Refer to the "How to have a Perfect Week at Camp" document.
- Calendars are subject to change



CAMP DIRECTOR:

Tiffany Vance | TVance@leegov.com

PINE ISLAND TRADITIONAL CAMP

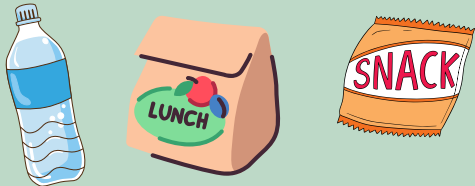
Phone Number

PERFECT WEEK AT PINE ISLAND ELEMENTARY

TRADITIONAL CAMP WEEK 4

GUARDIAN/CAMPER DAILY'S

- Parents/Guardians please read camp calendar and weekly email for any updates.
- Parents please send water bottle, morning & afternoon snack & lunch daily.



- Parents make sure to apply sunscreen on your child before dropping them off at camp.



CAMP HOURS

- Camp hours are 7:30 a.m. - 6 p.m.
Monday through Friday
- Morning snack is at 8:30 a.m.
- Lunch is at 12 p.m.
- Afternoon snack is at 3:30 p.m.

SPECIAL EVENTS

- On Tuesday is an all camp field trip to the United States Coastguard Station, and Lakes Park. Leave by 9 a.m. wear camp t-shirt.
- Wednesday we will walk to Spots Ice Cream Shoppe after lunch, bring \$3-\$5.
- Thursday we will walk to the Pine Island Pool, leave by 10:30 a.m. Please bring swimsuit, towel, sunscreen and \$1 for ice cream.

GUEST SPEAKERS

- Monday at 10 a.m. LCEC will visit us for a special presentation.



REMINDERS

- Parents please remember to write your campers name on their personal items.
- Parents please check our lost and found for any missing items.

CAMPER SIGN-IN/OUT POLICY

A parent or guardian is required to sign in and sign out each camper daily. Only people who have previously been listed on the Supplemental Information Sheet will be permitted to sign for your child at pick up. Photo ID will be required. Changes must be submitted in writing.



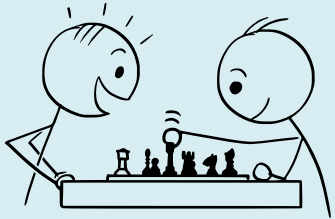
PINE ISLAND TRADITIONAL CAMP WEEK 5

Important announcements & reminders

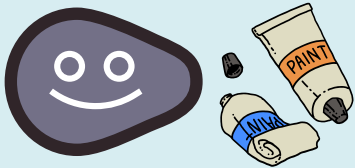
Parents please apply sunscreen before you drop your camper off.
Bring water bottle, pack morning & afternoon snack & lunch everyday.
Wear closed toe shoes, No electronics

**Monday
July 14**

Chess



rock painting



**Tuesday
July 15**

Pine Island Pool
leave by 10:30 a.m.
bring water bottle,
towel, sunscreen
& \$1 for ice cream



**Wednesday
July 16**

Team Building



walking to Spots
bring \$3-\$5



**Thursday
July 17**

Pine Island Pool
leave by 10:30 a.m.
bring water bottle,
towel, sunscreen
& \$1 for ice cream



**Friday
July 18**

All camp field trip
leave by 9:30 a.m.
Please wear
camp
t-shirt



- **Camp Hours** 7:30 a.m. - 6 p.m.
- Have questions? Refer to the "How to have a Perfect Week at Camp" document.
- Calendars are subject to change



CAMP DIRECTOR:

Tiffany Vance | TVance@leegov.com

PINE ISLAND TRADITIONAL CAMP

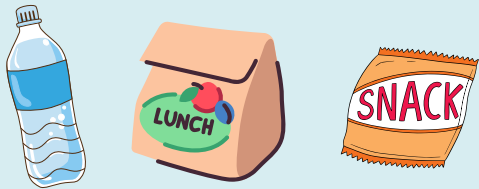
Phone Number

PERFECT WEEK AT PINE ISLAND ELEMENTARY

TRADITIONAL CAMP WEEK 5

GUARDIAN/CAMPER DAILY'S

- Parents/Guardians please read camp calendar and weekly email for any updates.
- Parents please send water bottle, morning & afternoon snack & lunch daily.



- Parents make sure to apply sunscreen on your child before dropping them off at camp.



CAMP HOURS

- Camp hours are 7:30 a.m. - 6 p.m. Monday through Friday
- Morning snack is at 8:30am
- Lunch is at 12 p.m.
- Afternoon snack is at 3:30 p.m.

SPECIAL EVENTS

- On Tuesday and Thursday at 10:30 a.m. we will walk to the Pine Island Pool. Campers please bring swimsuit, towel, sunscreen, and \$1 for ice cream.
- We will walk to Spots Ice Cream Shoppe on Wednesday after lunch, please bring \$3-\$5.
- Friday all camp field trip to the Imaginarium, leave by 9:30 a.m. wear camp t-shirt.

GUEST SPEAKERS

REMINDERS

- Parents please remember to write your campers name on their personal items.
- Parents please check our lost and found for any missing items.

CAMPER SIGN-IN/OUT POLICY

A parent or guardian is required to sign in and sign out each camper daily. Only people who have previously been listed on the Supplemental Information Sheet will be permitted to sign for your child at pick up. Photo ID will be required. Changes must be submitted in writing.



PINE ISLAND TRADITIONAL CAMP WEEK 6

Important announcements & reminders

Parents please apply sunscreen before you drop your camper off.
Bring water bottle, pack morning & afternoon snack & lunch everyday.
Wear closed toe shoes, No electronics

**Monday
July 21**

**GUEST
SPEAKER**

10 a.m.



Relay Race



**Tuesday
July 22**

Pine Island Pool
leave by
10:30 a.m.
bring water bottle,
towel, sunscreen
& \$1 for ice cream



**Wednesday
July 23**

All camp field
trip
wear camp
t-shirt
leave by
10:15am



**Thursday
July 24**

Pine Island Pool
leave by
10:30 a.m.
bring water bottle,
towel, sunscreen
& \$1 for ice cream



**Friday
July 25**

Basketball
on the court



Camp Movie



- **Camp Hours** 7:30 a.m. - 6 p.m.
- Have questions? Refer to the "How to have a Perfect Week at Camp" document.
- Calendars are subject to change



Camp Director:

Tiffany Vance | TVance@leegov.com

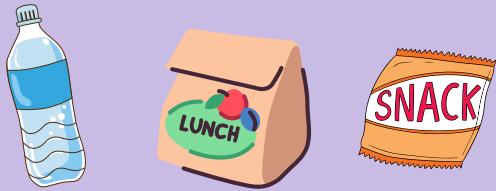
Pine Island Traditional Camp
Phone Number

PERFECT WEEK AT PINE ISLAND ELEMENTARY

TRADITIONAL CAMP WEEK 6

GUARDIAN/CAMPER DAILY'S

- Parents/Guardians please read camp calendar and weekly email for any updates.
- Parents please send water bottle, morning & afternoon snack & lunch daily.



- Parents make sure to apply sunscreen on your child before dropping them off at camp.



CAMP HOURS

- Camp hours are 7:30 a.m. - 6 p.m. Monday through Friday
- Morning snack is at 8:30 a.m.
- Lunch is at 12 p.m.
- Afternoon snack is at 3:30 p.m.

SPECIAL EVENTS

- Tuesday & Thursday at 10:30 a.m. we will walk to the Pine Island pool. Campers bring swimsuit, towel, sunscreen and \$1 for ice cream.
- Wednesday all camp field trip to Broadway Palms Dinner Theatre. Leave by 10:15 a.m. wear camp t-shirt. Lunch will be provided.



GUEST SPEAKERS

- Monday at 10 a.m. Bailey-Matthews National Shell Museum will visit us.



REMINDERS

- Parents please remember to write your campers name on their personal items.
- Parents please check our lost and found for any missing items.



CAMPER SIGN-IN/OUT POLICY

A parent or guardian is required to sign in and sign out each camper daily. Only people who have previously been listed on the Supplemental Information Sheet will be permitted to sign for your child at pick up. Photo ID will be required. Changes must be submitted in writing.

PINE ISLAND TRADITIONAL CAMP WEEK 7

Important announcements & reminders

CAMP WILL BE HELD AT THE PINE ISLAND PUBLIC LIBRARY FOR WEEK 7

Parents please apply sunscreen before you drop your camper off.
Bring water bottle, pack morning & afternoon snack & lunch everyday.
Wear closed toe shoes, No electronics

**Monday
July 28**

Pine Island Pool
leave by 10:30 a.m.
bring water bottle,
towel, sunscreen
& \$1 for ice cream



Brain games



**Tuesday
July 29**

Pine Island Pool
leave by 10:30 a.m.
bring water bottle,
towel, sunscreen
& \$1 for ice cream



**Wednesday
July 30**

**GUEST
SPEAKER**



Fishing at
Matlacha
Pier
with the Rangers
9:30 a.m.



12:30 p.m.
NFM rec center
bring \$3-\$5

**Thursday
July 31**

Pine Island Pool
leave by 10:30 a.m.
bring water bottle,
towel, sunscreen
& \$1 for ice cream

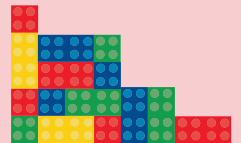


**Friday
August 1**

Play on
playground



LEGOs



- **Camp Hours** 7:30 a.m. - 6 p.m.
- Have questions? Refer to the "How to have a Perfect Week at Camp" document.
- Calendars are subject to change



CAMP DIRECTOR:

Tiffany Vance | TVance@leegov.com

PINE ISLAND TRADITIONAL CAMP

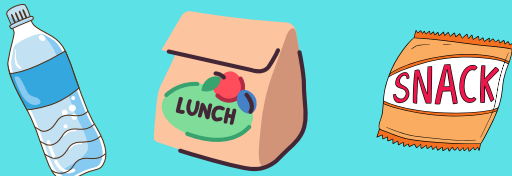
Phone Number

PERFECT WEEK AT PINE ISLAND ELEMENTARY

TRADITIONAL CAMP WEEK 7

GUARDIAN/CAMPER DAILY'S

- Parents/Guardians please read camp calendar and weekly email for any updates.
- Parents please send water bottle, morning & afternoon snack & lunch daily.



- Parents make sure to apply sunscreen on your child before dropping them off at camp.



CAMP HOURS

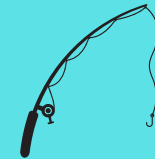
- Camp hours are 7:30 a.m. - 6 p.m. Monday through Friday
- Morning snack is at 8:30 a.m.
- Lunch is at 12 p.m.
- Afternoon snack is at 3:30 p.m.

SPECIAL EVENTS

- Monday, Tuesday & Thursday at 11 a.m. we will walk to the Pine Island pool. Campers bring swimsuit, towel, sunscreen and \$1 for ice cream.
- Wednesday at 9:30 a.m. all camp trip to Matlacha Community Park, for fishing on the pier. You may bring your own fishing pole & bait.
- We will leave for North Fort Myers Recreation Center after lunch for Southern Sno-balls. Please bring \$3-5.

GUEST SPEAKERS

- Wednesday at 10 a.m. the Lee County Rangers will meet us at Matlacha Community Park for fishing on the Pier.



REMINDERS

- Week Seven - Camp will be held at the Pine Island Public Library at 10701 Russell Rd. Bokeelia, FL 33922

DROP OFF BY 9 A.M.
PICK UP BEGINS AT 3:30 P.M.

CAMPER SIGN-IN/OUT POLICY

A parent or guardian is required to sign in and sign out each camper daily. Only people who have previously been listed on the Supplemental Information Sheet will be permitted to sign for your child at pick up. Photo ID will be required. Changes must be submitted in writing.

