

SLOUGH SECRETS

IMPORTANT ANNOUNCEMENTS & REMINDERS

- All campers **MUST** be signed in and out daily at the Interpretive Center at Six Mile Cypress Slough by a parent or guardian.
- Personal items such as cell phones and gaming devices should be left home.
- Campers must bring a non-perishable lunch, snacks, and refillable water bottle daily.
- Please bring a change of clothes, a towel, and extra closed-toed shoes on Friday.

**Monday
6/16**

8:30 a.m. Slough in a
Nutshell



Butterfly Presentation



Butterfly Tie-Dye



**Tuesday
6/17**

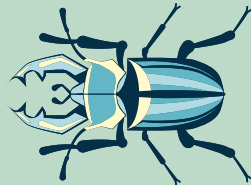
8:30 a.m. Scavenger
Hunt



Micro Hike

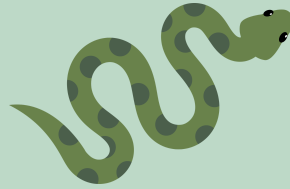


Create a Critter



**Wednesday
6/18**

8:30 a.m. Wildlife Walk



Adventures of a Water
Drop



Tree Cookies



**Thursday
6/19**

8:30 a.m. Camper Led
Walk



Get to Know a Tree



Nature Portrait



**Friday
6/20**

8:30 a.m. Wet Walk



Puppet Show
Family & Friends Invited!



2:45 p.m. Seating Begins

3:00 p.m. Show Starts!

- **Camp Hours** 8 a.m. - 4:30 p.m.
- Have questions? Refer to the "How to have a Perfect Week at Camp" document.
- Calendars are subject to change



CAMP DIRECTOR:

Adrienne Martin | AMartin4@leegov.com

SIX MILE CYPRESS SLOUGH SPECIALTY CAMP:

(239) 846-2246

PERFECT WEEK AT SIX MILE CYPRESS SLOUGH SPECIALTY CAMP

SLOUGH SECRETS WEEK 1

CAMPER DAILY'S

- Campers must wear closed-toed shoes.
- Bring a non-perishable lunch and snacks.
- Bring a refillable water bottle.

GUARDIAN DAILY'S

- Campers must be signed in and out at the Interpretive Center daily.
- Camp activities begin promptly at 8:30 a.m.
- Don't forget your photo ID!

CAMP HOURS

8 a.m. - 4:30 p.m.

Lunch at 12 p.m.

Snack times may vary based on activities

You are invited to a special puppet show put on by our campers. Family and friends welcome!

Seating begins at 2:45 p.m.

Friday will be an OPTIONAL early release day!

GUEST SPEAKERS

- Monday, June 16 - Ranger Rudd will join us at camp to teach us about Florida's butterflies and how we can help them flourish!

REMINDERS

- Friday morning is our wet walk! Campers must wear closed-toed shoes and long pants.

Please bring:

- change of clothes
- towel
- extra closed-toed shoes
- bag for wet clothes



CAMPER SIGN-IN/OUT POLICY

A parent or guardian is required to sign in and sign out each camper daily. Only people who have previously been listed on the Supplemental Information Sheet will be permitted to sign for your child at pick up. Photo ID will be required. Changes must be submitted in writing.

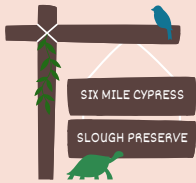
SUMMER NATURALISTS

IMPORTANT ANNOUNCEMENTS & REMINDERS

- All campers **MUST** be signed in and out daily at the Interpretive Center at Six Mile Cypress Slough by a parent or guardian.
- Personal items such as cell phones and gaming devices should be left home.
- Campers must bring a non-perishable lunch, snacks, and refillable water bottle daily.
- Please bring a change of clothes, a towel, and extra closed-toed shoes on Friday.

Monday
7/7

8:30 a.m. Guided Walk



If I was a Bird ...

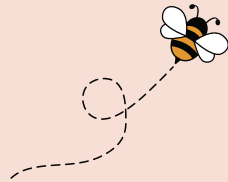


Intro to Slime Mold



Tuesday
7/8

8:30 a.m. Nature Walk



Conservancy of SWFL

**GUEST
SPEAKER**

Quiet as a Mouse



Wednesday
7/9

8:30 a.m. Wildlife Walk



Photography



Intro to Tracking



Thursday
7/10

8:30 a.m. Sensory Walk



Know Your Noggins



Migration Headache



Friday
7/11

8:30 a.m. Wet Walk



Slime Mold Presentations
Family & Friends Invited!



2:45 p.m. Seating Begins

3:00 p.m. Show Starts!

- **Camp Hours** 8 a.m. - 4:30 p.m.
- Have questions? Refer to the "How to have a Perfect Week at Camp" document.
- Calendars are subject to change



CAMP DIRECTOR:

Adrienne Martin | AMartin4@leegov.com

SIX MILE CYPRESS SLOUGH SPECIALTY CAMP:

(239) 826-4426

PERFECT WEEK AT SIX MILE CYPRESS SLOUGH SPECIALTY CAMP

SUMMER NATURALISTS WEEK 4

CAMPER DAILY'S

- Campers must wear closed-toed shoes.
- Bring a non-perishable lunch and snacks.
- Bring a refillable water bottle.

GUARDIAN DAILY'S

- Campers must be signed in and out at the Interpretive Center daily.
- Camp activities begin promptly at 8:30 a.m.
- Don't forget your photo ID!

CAMP HOURS

8 a.m. - 4:30 p.m.

Lunch at 12 p.m.

Snack times may vary based on activities

SPECIAL EVENTS

You are invited to a scientific slime mold presentation put on by our campers.

Family and friends welcome!

Seating begins at 2:45 p.m.

Friday will be an OPTIONAL early release day!

GUEST SPEAKERS

- Tuesday, July 8 - The Conservancy of SW FL is bringing their Learning Adventures Bus to teach our campers about alligators!

REMINDERS

- Friday morning is our wet walk! Campers must wear closed-toed shoes and long pants.

Please bring:

- change of clothes
- towel
- extra closed-toed shoes
- bag for wet clothes



CAMPER SIGN-IN/OUT POLICY

A parent or guardian is required to sign in and sign out each camper daily. Only people who have previously been listed on the Supplemental Information Sheet will be permitted to sign for your child at pick up. Photo ID will be required. Changes must be submitted in writing.

ART IN NATURE

IMPORTANT ANNOUNCEMENTS & REMINDERS

- All campers **MUST** be signed in and out daily at the Interpretive Center at Six Mile Cypress Slough by a parent or guardian.
- Personal items such as cell phones and gaming devices should be left home.
- Campers must bring a non-perishable lunch, snacks, and refillable water bottle daily.
- Please bring a change of clothes, a towel, and extra closed-toed shoes on Friday.

Monday
7/21

8:30 a.m. Nature Walk



Photography Lesson



Sculpture Creation

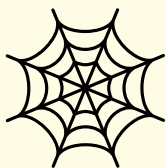


Tuesday
7/22

8:30 a.m. Sense-ational Walk



Spider Web Weaving



Rock Patterns

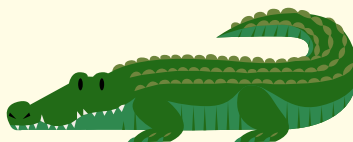


Wednesday
7/23

8:30 a.m. Nature Portrait



Animal Keychains



Build a Bird



Thursday
7/24

8:30 a.m. Beehive Hotel



Butterfly Origami



Tree Cookies



Friday
7/25

8:30 a.m. Wet Walk



Art Showcase
Family & Friends
Invited!



3 p.m. Showcase
Begins

- **Camp Hours** 8 a.m. - 4:30 p.m.
- Have questions? Refer to the "How to have a Perfect Week at Camp" document.
- Calendars are subject to change



CAMP DIRECTOR:

Adrienne Martin | AMartin4@leegov.com

SIX MILE CYPRESS SLOUGH SPECIALTY CAMP:

(239) 826-4426

PERFECT WEEK AT SIX MILE CYPRESS SLOUGH SPECIALTY CAMP

ART IN NATURE WEEK 6

CAMPER DAILY'S

- Campers must wear closed-toed shoes.
- Bring a non-perishable lunch and snacks.
- Bring a refillable water bottle.

GUARDIAN DAILY'S

- Campers must be signed in and out at the Interpretive Center daily.
- Camp activities begin promptly at 8:30 a.m.
- Don't forget your photo ID!

CAMP HOURS

8 a.m. - 4:30 p.m.

Lunch at 12 p.m.

Snack times may vary based on activities

SPECIAL EVENTS

We are pleased to invite you to the 2025 Six Mile Cypress Slough Summer Camp Art Gallery GRAND OPENING hosted by our campers.
Family and friends welcome!

Gallery opens at 3 p.m.

Friday will be an OPTIONAL early release day!

GUEST SPEAKERS

- Monday, July 21 - Photography lesson hosted by the Friends of Six Mile Cypress Slough Preserve.
- Thursday, July 24 - UF/IFAS will be helping us make a bee hotel!

REMINDERS

- Friday morning is our wet walk! Campers must wear closed-toed shoes and long pants.

Please bring:

- change of clothes
- towel
- extra closed-toed shoes
- bag for wet clothes

CAMPER SIGN-IN/OUT POLICY

A parent or guardian is required to sign in and sign out each camper daily. Only people who have previously been listed on the Supplemental Information Sheet will be permitted to sign for your child at pick up. Photo ID will be required. Changes must be submitted in writing.



WILDERNESS EXPLORERS

IMPORTANT ANNOUNCEMENTS & REMINDERS

- All campers **MUST** be signed in and out daily at the Interpretive Center at Six Mile Cypress Slough by a parent or guardian.
- Personal items such as cell phones and gaming devices should be left home.
- Campers must bring a non-perishable lunch, snacks, and refillable water bottle daily.
- Please bring a change of clothes, a towel, and extra closed-toed shoes on Friday.

**Monday
7/28**

8:30 a.m. Survival Walk



Shelter Building



Water Filtration



**Tuesday
7/29**

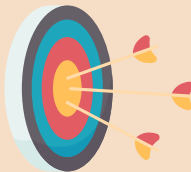
8:30 a.m. Importance of
Fire



Fire Making

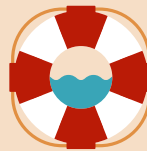


Bow & Arrow



**Wednesday
7/30**

8:30 a.m. Water
Survival Skills



Open Swim



Ice Cream



**Thursday
7/31**

8:30 a.m. Canning



Tracks & Scat



Knot Tying



**Friday
8/1**

8:30 a.m. Wet Walk



Skills Showcase
Family & Friends
Invited!



3 p.m. Showcase
Begins

- **Camp Hours** 8 a.m. - 4:30 p.m.
- Have questions? Refer to the "How to have a Perfect Week at Camp" document.
- Calendars are subject to change



CAMP DIRECTOR:

Adrienne Martin | AMartin4@leegov.com

SIX MILE CYPRESS SLOUGH SPECIALTY CAMP:

(239) 826-4426

PERFECT WEEK AT SIX MILE CYPRESS SLOUGH SPECIALTY CAMP

WILDERNESS EXPLORERS WEEK 7

CAMPER DAILY'S

- Campers must wear closed-toed shoes.
- Bring a non-perishable lunch and snacks.
- Bring a refillable water bottle.

GUARDIAN DAILY'S

- Campers must be signed in and out at the Interpretive Center daily.
- Camp activities begin promptly at 8:30 a.m.
- Don't forget your photo ID!

CAMP HOURS

8 a.m. - 4:30 p.m.

Lunch at 12 p.m.

Snack times may vary based on activities

SPECIAL EVENTS

Wednesday, July 30 will be a pool day at Pine Island Pool to learn water survival techniques.
Bus leaves PROMPTLY at 8:15 a.m.

You are invited to a special skills presentation put on by our campers. Family and friends welcome!

Seating begins at 2:45 p.m.

Friday will be an OPTIONAL early release day!

GUEST SPEAKERS

- Thursday, July 31 - UF/IFAS will be teaching our campers how to can vegetables!

REMINDERS

- Friday morning is our wet walk! Campers must wear closed-toed shoes and long pants.

Please bring:

- change of clothes
- towel
- extra closed-toed shoes
- bag for wet clothes



CAMPER SIGN-IN/OUT POLICY

A parent or guardian is required to sign in and sign out each camper daily. Only people who have previously been listed on the Supplemental Information Sheet will be permitted to sign for your child at pick up. Photo ID will be required. Changes must be submitted in writing.