

# CAMP SUNSHINE WEEK # 1

## IMPORTANT ANNOUNCEMENTS & REMINDERS

### BLASTING INTO SUMMER 2025

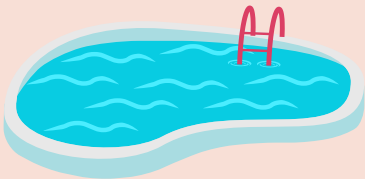
Please sign in & out each day !

Don't forget to pack a bathing suit, towel, and sunscreen for your child swim day. Also, don't forget lunch and snacks. On field trip days, campers

**Monday  
June 16**

**ANNOUNCEMENT AT 9 A.M.**

Get to know each other. Play Icebreakers with your group today!



**Tuesday  
June 17**

**ANNOUNCEMENT AT 9 A.M.**

**OUTSIDE PLAY  
A.M. SNACK**

**ARTS & CRAFTS**

**SWIMMING  
1.PM-2PM**

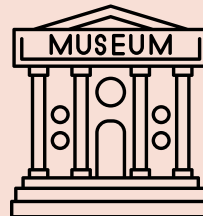


**Wednesday  
June 18**

**ANNOUNCEMENT AT 9 A.M.**

**OUTSIDE PLAY  
A.M. SNACK**

**FILED TO  
MID CENTURY MARCO JR.  
PRESCHOOL PROGRAM  
HISTORICAL MUSEUM**



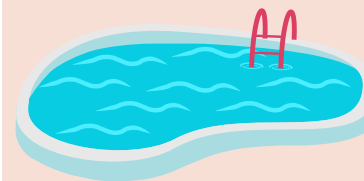
**Thursday  
June 19**

**ANNOUNCEMENT AT 9 A.M.**

**OUTSIDE PLAY  
A.M. SNACK**

**ARTS & CRAFTS**

**SWIMMING  
1.PM-2PM**



**Friday  
June 20**

**ANNOUNCEMENT AT 9 A.M.**

**OUTSIDE PLAY  
A.M. SNACK  
CAMP FIELD TRIP**

**ESTERO FIRE RESCUE  
TOUR 9:30-10:30 A.M.**



- Camp hours: 8:00 a.m.- 4:00 p.m.
- All campers must be signed in and out
- Lunch and snack are NOT provided
- Calendars are subject to change
- Please pack a swimsuit, sunscreen, and towel for pool days



**CAMP DIRECTOR: EDITH MCDONALD**  
**EMCDOANLD@LEE.GOV.COM**  
**CAMP SUNSHINE**  
**PHONE NUMBER 239-357-4793**

# PERFECT WEEK AT TYPE CAMP

## CAMP SUNSHINE WEEK # 1

### CAMPER DAILY'S

- **Bring** to camp
- Lunch & Snack
- Fluids



- **Leave** at Home
- Electronics
- Toys
- Stuff animals etc.

### GUARDIAN DAILY'S

- **Please** sign your child in/out
- daily.

### CAMP HOURS

- camp hours 8:00 A.M. TO 4:30 P.M.
- Morning Announcements 9:00 A.M.
  - Lunch @ Noon
  - Snacks @ 9 a.m. & 3:00 P.M.



### REMINDERS

Check please make sure that you have all swim wear, sunscreen, flip flops, change of clothing, towel & hat  
label your child items

Camper must wear campers must wear camp shirts on field trip days

Also wear closed toe shoes to camp

### SPECIAL EVENTS

Filed to  
Mid Century Marco Jr.  
Preschool Program  
Historical Museum



- Every morning meet and greet .



#### Swim days

Tuesday and Thursday

- **Bowling**
- Friday



### CAMPER SIGN-IN/OUT POLICY

A parent or guardian is required to sign in and sign out each camper daily. Only people who have previously been listed on the Supplemental Information Sheet will be permitted to sign for your child at pick up. Photo ID will be required. Changes must be submitted in writing.

# CAMP SUNSHINE WEEK # 2

## IMPORTANT ANNOUNCEMENTS & REMINDERS CAMP S'MORE

Please sign in & out each day !

Don't forget to pack a bathing suit, towel, and sunscreen for your child swim day. Also, don't forget lunch and snacks.

**Monday  
June 23**

**ANNOUNCEMENT AT 9 A.M.**

**OUTSIDE PLAY  
A.M. SNACK**



**TRAIN RIDE**



**Tuesday  
June 24**

**ANNOUNCEMENT AT 9 A.M.**

**OUTSIDE PLAY  
A.M. SNACK**

**ARTS & CRAFTS**



**Wednesday  
June 25**

**ANNOUNCEMENT AT 9 A.M.**

**OUTSIDE PLAY  
A.M. SNACK**

**TIME FOR  
an  
adventure**

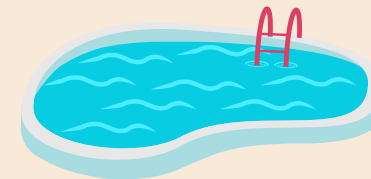
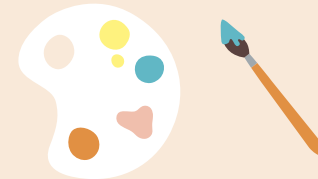
**FILED TO  
COLLIER COUNTY  
PRESCHOOL PROGRAM  
HISTORICAL MUSEUM**

**Thursday  
June 26**

**ANNOUNCEMENT AT 9 A.M.**

**OUTSIDE PLAY  
A.M. SNACK**

**ARTS & CRAFTS**

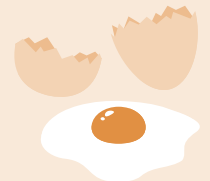


**Friday  
June 27**

**ANNOUNCEMENT AT 9 A.M.**

**OLGA**

**EGG DROP COMPETITION  
WITH THE FIRE  
DEPARTMENT  
ALL GROUPS AT 9:30 A.M.**



**\$3 & \$4 cash only**

**KONA ICE  
1 P.M.**

- Camp hours: 8:00 a.m.- 4:00 p.m.
- All campers must be signed in and out
- Lunch and snack are NOT provided
- Calendars are subject to change
- Please pack a swimsuit, sunscreen, and towel for pool days



**CAMP DIRECTOR: EDITH MCDONALD  
EMCDOANLD@LEE.GOV.COM  
CAMP SUNSHINE SPECIAL NEEDS CAMP  
PHONE NUMBER 239-357-4793**

# PERFECT WEEK AT TYPE CAMP

## CAMP SUNSHINE WEEK #2

### CAMPER DAILY'S

- **Bring** to camp
- Lunch & Snack
- Fluids



- **Leave** at Home
- Electronics
- Toys
- Stuff animals etc.

### GUARDIAN DAILY'S

- **Please** sign your child in/out
- daily.

### CAMP HOURS

- camp hours 8:00 A.M. TO 4:30 P.M.
- Morning Announcements 9:00 A.M.
  - Lunch @ Noon
  - Snacks @ 9 a.m. & 3:00 P.M.

### GUEST SPEAKERS

- Lee Tran

### REMINDERS

#### Swim days

Tuesday and Thursday

Check please make sure that you have all swim wear, sunscreen, flip flops, change of clothing, towel & hat label your child items

Camper must wear campers must wear camp shirts on field trip days

Also wear closed toe shoes to camp

### SPECIAL EVENTS

FILED TO  
COLLIER COUNTY  
PRESCHOOL PROGRAM  
HISTORICAL MUSEUM

TIME FOR  
an  
adventure



**Bowling**  
Friday



### CAMPER SIGN-IN/OUT POLICY

A parent or guardian is required to sign in and sign out each camper daily. Only people who have previously been listed on the Supplemental Information Sheet will be permitted to sign for your child at pick up. Photo ID will be required. Changes must be submitted in writing.

# CAMP SUNSHINE WEEK #3

## IMPORTANT ANNOUNCEMENTS & REMINDERS STARS & STRIPES

Welcome to camp! Please sign in & out each day!

Don't forget to pack a bathing suit, towel, and sunscreen for your child swim day. Also, don't forget lunch and snacks

**MONDAY  
JUNE 30**

**ANNOUNCEMENT AT 9 A.M.**

**VAN LEAVES AT  
9:00 A.M.  
BAG LUNCH**

**EVERGLADE  
WONDER  
GARDEN**



**TUESDAY  
JULY 1**

**ANNOUNCEMENT AT 9 A.M.**

**OUTSIDE PLAY  
A.M. SNACK**



**WEDNESDAY  
JULY 2**

**ANNOUNCEMENT AT 9 A.M.**

**FIELD TRIP  
TO VAN LEAVES  
AT 9:00 A.M.  
BAG LUNCH**

**SUN -N- FUN LAGOON  
WATER PARK**



**THURSDAY  
JULY 3**

**ANNOUNCEMENT AT 9 A.M.**

**OUTSIDE PLAY  
A.M. SNACK**

**GUEST  
SPEAKER**

**ARTS & CRAFTS**



**FRIDAY  
JULY 4**



**OOPS! WE'RE ALL TIED UP IN  
FESTIVE SHENANIGANS FOR  
THE 4TH OF JULY! 🌟**

- **CAMP HOURS: 8:00 A.M. - 4:00 P.M.**
- **ALL CAMPERS MUST BE SIGNED IN AND OUT**
- **LUNCH AND SNACK ARE NOT PROVIDED**
- **CALENDARS ARE SUBJECT TO CHANGE**
- **PLEASE PACK A SWIMSUIT, SUNSCREEN, AND TOWEL FOR POOL DAYS**



**CAMP DIRECTOR: EDITH MCDONALD**

**EMCDONALD[AT]LEEGOV.COM**

**CAMP SUNSHINE SPECIAL NEEDS CAMP**

**PHONE NUMBER 239-357-4793**

# PERFECT WEEK AT TYPE CAMP

## CAMP SUNSHINE WEEK #3

### CAMPER DAILY'S

- **Bring** to camp
- Lunch & Snack
- Fluids



### CAMP HOURS

- camp hours 8:00 A.M. TO 4:30 P.M.
- Morning Announcements 9:00 A.M.
  - Lunch @ Noon
  - Snacks @ 9 a.m. & 3:00 P.M.

### REMINDERS

*Sorry we're*  
**CLOSED**



**OOPS! WE'RE ALL TIED UP IN  
FESTIVE SHENANIGANS FOR  
THE 4TH OF JULY! 🌞**

### GUARDIAN DAILY'S

- **Leave** at Home
  - Electronics
  - Toys
  - Stuff animals etc.
- 
- **Please** sign your child in/out daily.

### SPECIAL EVENTS

**VAN LEAVES AT  
9:00 A.M.  
BAG LUNCH**

**EAGLE LAKE  
AQUATIC  
FACILITY WATER  
PARK**



**SUN -N- FUN LAGOON  
WATER PARK**



### CAMPER SIGN-IN/OUT POLICY

A parent or guardian is required to sign in and sign out each camper daily. Only people who have previously been listed on the Supplemental Information Sheet will be permitted to sign for your child at pick up. Photo ID will be required. Changes must be submitted in writing.



# CAMP SUNSHINE WEEK # 4

## IMPORTANT ANNOUNCEMENTS & REMINDERS CAMP SUNRISE

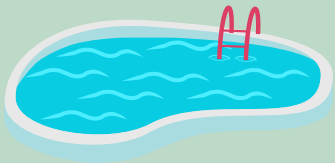
Welcome to camp! Please sign in & out each day!  
Don't forget to pack a bathing suit, towel, and sunscreen for your child swim day. Also, don't forget lunch and snacks

**Monday  
July 7**

**ANNOUNCEMENT AT 9 A.M.**

**OUTSIDE PLAY  
A.M. SNACK**

**ARTS & CRAFTS**



**Tuesday  
July 8**

**ANNOUNCEMENT AT 9 A.M.**

**OUTSIDE PLAY  
A.M. SNACK**

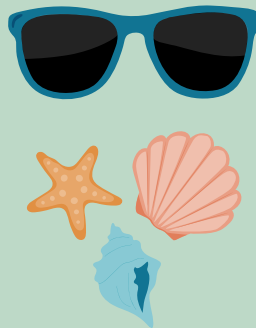
**ARTS & CRAFTS**



**Wednesday  
July 9**

**ANNOUNCEMENT AT 9 A.M.**

**Dress Up Day  
"Water Warrior"**



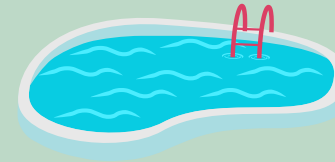
**OLGA**

**GUEST SPEAKER  
SHELL MUSEUM  
1 P.M.**

**Thursday  
July 10**

**ANNOUNCEMENT AT 9 A.M.**

**OUTSIDE PLAY  
A.M. SNACK**



**Friday  
July 11**

**ANNOUNCEMENT AT 9 A.M.**

**OUTSIDE PLAY  
A.M. SNACK**

**7/11 Slurpee Day!**



**HeadPinz**  
Entertainment Center



- **CAMP HOURS: 8:00 A.M. - 4:00 P.M.**
- **ALL CAMPERS MUST BE SIGNED IN AND OUT**
- **LUNCH AND SNACK ARE NOT PROVIDED**
- **CALENDARS ARE SUBJECT TO CHANGE**
- **PLEASE PACK A SWIMSUIT, SUNSCREEN, AND TOWEL FOR POOL DAYS**



**CAMP DIRECTOR: EDITH MCDONALD  
| [EMCDONALD@LEE.GOV](mailto:EMCDONALD@LEE.GOV)**

**CENTER NAME SUNSHINE SPECIAL NEEDS CAMP  
PHONE NUMBER 239-357-4793**



# PERFECT WEEK AT TYPE CAMP

## CAMP SUNSHINE WEEK #4

### CAMPER DAILY'S

- **Bring** to camp
- Lunch & Snack
- Fluids
- **Leave** at Home
- Electronics
- Toys
- Stuff animals etc.

### GUARDIAN DAILY'S

- **Please** sign your child in/out
- daily.

### CAMP HOURS

- camp hours 8:00 A.M. TO 4:30 P.M.
- Morning Announcements 9:00 A.M.
  - Lunch @ Noon
  - Snacks @ 9 a.m. & 3:00 P.M.

### GUEST SPEAKERS

**GUEST SPEAKER**  
**SHELL MUSEUM**  
**1P.M.**

### REMINDERS

Swim days  
Tuesday and Thursday

Check please make sure that you have all swim wear, sunscreen, flip flops, change of clothing, towel & hat label your child items

Camper must wear campers must wear camp shirts on field trip days

Also wear closed toe shoes to camp

### SPECIAL EVENTS

**FIELD TRIP**  
**OLGA**



**HeadPinz**  
Entertainment Center



### CAMPER SIGN-IN/OUT POLICY

A parent or guardian is required to sign in and sign out each camper daily. Only people who have previously been listed on the Supplemental Information Sheet will be permitted to sign for your child at pick up. Photo ID will be required. Changes must be submitted in writing.



# CAMP SUNSHINE WEEK #5

## IMPORTANT ANNOUNCEMENTS & REMINDERS CAMP ON THE MOVE

Welcome to camp! Please sign in & out each day!

Don't forget to pack a bathing suit, towel, and sunscreen for your child swim day. Also, don't forget lunch and snacks

**Monday  
July 14**

**ANNOUNCEMENT AT 9 A.M.**

**OUTSIDE PLAY  
A.M. SNACK**

**GUEST  
SPEAKER**



**Tuesday  
July 15**

**ANNOUNCEMENT AT 9 A.M.**

**OUTSIDE PLAY  
A.M. SNACK**

**Tie Dye Day**



**Wednesday  
July 16**

**ANNOUNCEMENT AT 9 A.M.**

**OUTSIDE PLAY  
A.M. SNACK**

**FIELD TRIP TO  
ICE AGE EXPLORATION  
PROGRAM  
CAMP LEAVES AT 9 A.M.  
CAMP RETURNS AT 3:30 P.M.**

**Thursday  
July 17**

**ANNOUNCEMENT AT 9 A.M.**

**OUTSIDE PLAY  
A.M. SNACK**

**Wear a shirt  
for your  
friends to  
sign!**

**Bring a white T-shirt!**



**Friday  
July 18**

**ANNOUNCEMENT AT 9 A.M.**

**OUTSIDE PLAY  
A.M. SNACK**



- **CAMP HOURS: 8:00 A.M.- 4:00 P.M.**
- **ALL CAMPERS MUST BE SIGNED IN AND OUT**
- **LUNCH AND SNACK ARE NOT PROVIDED**
- **CALENDARS ARE SUBJECT TO CHANGE**
- **PLEASE PACK A SWIMSUIT, SUNSCREEN, AND TOWEL FOR POOL DAYS**



**CAMP DIRECTOR: EDITH MCDONALD  
| [EMCDONALD@LEE.GOV](mailto:EMCDONALD@LEE.GOV)**

**CAMP SUNSHINE & CAMP TYPE: SPECIAL NEED CAMP  
PHONE NUMBER 239-357-4793**

# PERFECT WEEK AT TYPE CAMP

## CAMP SUNSHINE WEEK #5

### CAMPER DAILY'S

- **Bring** to camp
- Lunch & Snack
- Fluids

- **Leave** at Home
- Electronics
- Toys
- Stuff animals etc.

### GUARDIAN DAILY'S

- **Please** sign your child in/out
- daily.

### CAMP HOURS

- camp hours 8:00 A.M. TO 4:30 P.M.
- Morning Announcements 9:00 A.M.
  - Lunch @ Noon
  - Snacks @ 9 a.m. & 3:00 P.M.

### GUEST SPEAKERS REMINDERS

Swim days  
Tuesday and Thursday

Check please make sure that you have all swim wear, sunscreen, flip flops, change of clothing, towel & hat label your child items

Camper must wear campers must wear camp shirts on field trip days

Also wear closed toe shoes to camp

### SPECIAL EVENTS

welcome to  
**Lakes Park**

TRAIN RIDE



FIELD TRIP TO  
ICE AGE EXPLORATION  
PROGRAM

**CAMP LEAVES AT 9 A.M.**  
**CAMP RETURNS AT 3:30 P.M.**



### CAMPER SIGN-IN/OUT POLICY

A parent or guardian is required to sign in and sign out each camper daily. Only people who have previously been listed on the Supplemental Information Sheet will be permitted to sign for your child at pick up. Photo ID will be required. Changes must be submitted in writing.



# CAMP SUNSHINE WEEK # 6

## IMPORTANT ANNOUNCEMENTS & REMINDERS Camp Funville

Welcome to camp! Please sign in & out each day!

Don't forget to pack a bathing suit, towel, and sunscreen for your child swim day. Also, don't forget lunch and snacks

**Monday  
July 21**

**ANNOUNCEMENT AT 9 A.M.**

**SPECIAL EQUESTRIAN**

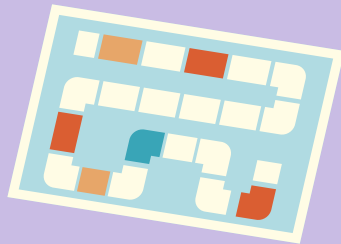


**Tuesday  
July 22**

**ANNOUNCEMENT AT 9 A.M.**

**OUTSIDE PLAY  
A.M. SNACK**

**GROUP  
TIME**



**Day of Week  
July 23**

**ANNOUNCEMENT AT 9 A.M.**

**GULF COAST  
TIME CENTER**



**Day of Week  
July 24**

**ANNOUNCEMENT AT 9 A.M.**

**OUTSIDE PLAY  
A.M. SNACK**

**GROUP  
ACTIVITY**



**Day of Week  
July 25**

**ANNOUNCEMENT AT 9 A.M.**

**GUEST  
SPEAKER**

**WITH TONI  
FROM LEE TRAN  
LUNCH [AT] MCDONALD**



- **CAMP HOURS: 8:00 A.M. - 4:00 P.M.**
- **ALL CAMPERS MUST BE SIGNED IN AND OUT**
- **LUNCH AND SNACK ARE NOT PROVIDED**
- **CALENDARS ARE SUBJECT TO CHANGE**
- **PLEASE PACK A SWIMSUIT, SUNSCREEN, AND TOWEL FOR POOL DAYS**



**CAMP DIRECTOR: EDITH MCDONALD**  
**EMCDONALD@LEE.GOV.COM**  
**CAMP SUNSHINE & CAMP TYPE: SPECIAL NEEDS**  
**PHONE NUMBER 239357-4793**

# PERFECT WEEK AT TYPE CAMP

## CAMP SUNSHINE WEEK #6

### CAMPER DAILY'S

- **Bring** to camp
- Lunch & Snack
- Fluids

- **Leave** at Home
- Electronics
- Toys
- Stuff animals etc.

### GUARDIAN DAILY'S

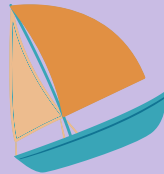
- **Please** sign your child in/out
- daily.

### CAMP HOURS

- camp hours 8:00 A.M. TO 4:30 P.M.
- Morning Announcements 9:00 A.M.
  - Lunch @ Noon
  - Snacks @ 9 a.m. & 3:00 P.M.

### SPECIAL EVENTS

**TIN CITY  
BOAT RIDE  
VAN LEAVES [AT]  
9A.M. SHARP**



**GULF COAST  
TIME CENTER**



**LUNCH [AT] MCDONALD**

### GUEST SPEAKERS

**GUEST  
SPEAKER**

**WITH TONI**

### REMINDERS

Swim days  
Tuesday and Thursday

Check please make sure  
that you have all swim wear,  
sunscreen, flip flops, change  
of clothing, towel & hat  
label your child items

Camper must wear  
campers must wear camp  
shirts on field trip days

Also wear closed toe shoes  
to camp

### CAMPER SIGN-IN/OUT POLICY

A parent or guardian is required to sign in and sign out each camper daily. Only people who have previously been listed on the Supplemental Information Sheet will be permitted to sign for your child at pick up. Photo ID will be required. Changes must be submitted in writing.



# CAMP SUNSHINE WEEK #7

## IMPORTANT ANNOUNCEMENTS & REMINDERS SNOOZE ON OUT OF CAMP WK 7, 2025

Welcome to camp! Please sign in & out each day!  
Don't forget to pack a bathing suit, towel, and sunscreen for your child swim day. Also, don't forget lunch and snacks

**Day of Week  
June 28**

**ANNOUNCEMENT AT 9 A.M.**

**VAN LEAVES AT 9 A.M.**



**BABCOCK RANCH**

**Day of Week  
June 29**

**ANNOUNCEMENT AT 9 A.M.**

**OUTSIDE PLAY  
A.M. SNACK**

**GROUP ACTIVITY**



**POOL DAY**



**Day of Week  
June 30**

**ANNOUNCEMENT AT 9 A.M.**

**GULF COAST  
TIME CENTER**



**Day of Week  
June 31**

**ANNOUNCEMENT AT 9 A.M.**

**OUTSIDE PLAY  
A.M. SNACK**



**POOL DAY**



**Day of Week  
Aug 1**

**ANNOUNCEMENT AT 9 A.M.**

**OUTSIDE PLAY  
A.M. SNACK**



- **CAMP HOURS: 8:00 A.M. - 4:00 P.M.**
- **ALL CAMPERS MUST BE SIGNED IN AND OUT**
- **LUNCH AND SNACK ARE NOT PROVIDED**
- **CALENDARS ARE SUBJECT TO CHANGE**
- **PLEASE PACK A SWIMSUIT, SUNSCREEN, AND TOWEL FOR POOL DAYS**



**CAMP DIRECTOR:**

Edith McDonald | [EMCDONAL@leegov.com](mailto:EMCDONAL@leegov.com)

**CAMP SUNSHINE & CAMP TYPE : SPECIAL NEEDS**

Phone Number 239-357-4793

# PERFECT WEEK AT TYPE CAMP

## CAMP SUNSHINE WEEK #7

- **Bring** to camp
- Lunch & Snack
- Fluids

- **Leave** at Home
- Electronics
- Toys
- Stuff animals etc.

### GUARDIAN DAILY'S

- **Please** sign your child in/out
- daily.

### CAMP HOURS

- camp hours 8:00 A.M. TO 4:30 P.M.
- Morning Announcements 9:00 A.M.
  - Lunch @ Noon
  - Snacks @ 9 a.m. & 3:00 P.M.

### REMINDERS

Swim days

Tuesday and Thursday

Check please make sure that you have all swim wear, sunscreen, flip flops, change of clothing, towel & hat label your child items

Camper must wear campers must wear camp shirts on field trip days

Also wear closed toe shoes to camp

### SPECIAL EVENTS



### CAMPER SIGN-IN/OUT POLICY

A parent or guardian is required to sign in and sign out each camper daily. Only people who have previously been listed on the Supplemental Information Sheet will be permitted to sign for your child at pick up. Photo ID will be required. Changes must be submitted in writing.

