

# NFM MIDDLE SCHOOL CAMP WEEK 1

## IMPORTANT ANNOUNCEMENTS & REMINDERS

Snow Cones on Wednesday (Bring \$3 - \$5)

Field trip this Friday (Wear your camp shirt and bring a lunch)

**Monday  
June 16th**

=Welcome=



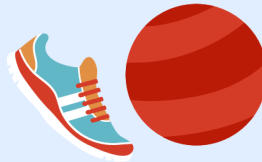
**Tuesday  
June 17th**

Department of  
Juvenile Justice  
G.A.A.P  
Program  
12:30 - 1:30 p.m.



**Wednesday  
June 18th**

Kickball Battle



Snow Cones  
@12:30 p.m.



**Thursday  
June 19th**

Keep Lee County  
Beautiful:  
12:30 - 1:15 p.m.



Mr. Eddies  
bracelet making



**Friday  
June 20th**

Kids Play  
11 a.m.  
@The Florida Rep  
Lunch at Centennial  
Park



- **Camp Hours** 7:30 a.m. - 6 p.m.
- Have questions? Refer to the "How to have a Perfect Week at Camp" document.
- Calendars are subject to change



**CAMP DIRECTOR:**

Ryan Vance | [Rvance@leegov.com](mailto:Rvance@leegov.com)

**NFM RECREATION CENTER:**

239-533-7200

# PERFECT WEEK AT NFM MIDDLE SCHOOL CAMP

## MIDDLE SCHOOL CAMP WEEK 1

### CAMPER DAILY'S

- Breakfast and lunch are provided by the school district otherwise you can pack a lunch.
- Snacks are not provided. Please pack & bring snacks for snack time.
- Bring a sealed and refillable water bottle to stay hydrated.
- Do NOT bring electronics or other toys from home.
- Wear closed toe shoes and dress comfortably.

### OTHER NOTES

- Friday: Campers must wear their camp T-shirt to camp for the field trip.

### CAMP HOURS

- Open at 7:30am - 6:00pm
- Breakfast at 8:30 - 9:00am
- Lunch at 11:00 - 11:45am
- Snack at 3:15 - 3:45pm

### EVENTS

- Wednesday - Snow Cones. Bring \$3 - \$5
- Friday - Field Trip to The Florida Rep

### GUEST SPEAKERS

- Thursday - Keep Lee County Beautiful

### REMINDERS

- Wednesday - Remember to bring cash for snow cones. \$3 or more to get what you would like.
- Friday: Lunch will not be provided. Please bring a lunch.



### CAMPER SIGN-IN/OUT POLICY

A parent or guardian is required to sign in and sign out each camper daily. Only people who have previously been listed on the Supplemental Information Sheet will be permitted to sign for your child at pick up. Photo ID will be required. Changes must be submitted in writing.



# NFM MIDDLE SCHOOL CAMP WEEK 2

## IMPORTANT ANNOUNCEMENTS & REMINDERS

Snow Cones on Wednesday (Bring \$3 - \$5)  
Pool Day on Friday

**Monday**  
June 23rd

≡Welcome≡



**Tuesday**  
June 24th

CPR Class  
Noon - 1 p.m.



Knockout  
Tournament



**Wednesday**  
June 25th

Table Tennis  
Battle



Snow Cones  
@12:30 p.m.



**Thursday**  
June 26th

Hockey Battle  
5 v 5



Nintendo  
Switch Sports



**Friday**  
June 27th

Pool Day  
11 a.m. - 1 p.m.



Bring a towel,  
sunscreen, swimsuit,  
and money for ice  
cream.



- **Camp Hours** 7:30 a.m. - 6 p.m.
- Have questions? Refer to the "How to have a Perfect Week at Camp" document.
- Calendars are subject to change



### CAMP DIRECTOR:

Ryan Vance | [Rvance@leegov.com](mailto:Rvance@leegov.com)

### NFM RECREATION CENTER:

239-533-7200

# PERFECT WEEK AT NFM MIDDLE SCHOOL CAMP

## MIDDLE SCHOOL CAMP WEEK 2

### CAMPER DAILY'S

- Breakfast and lunch are provided by the school district otherwise you can pack a lunch.
- Snacks are not provided. Please pack & bring snacks for snack time.
- Bring a sealed and refillable water bottle to stay hydrated.
- Do NOT bring electronics or other toys from home.
- Wear closed toe shoes and dress comfortably.

### CAMP HOURS

- Open at 7:30am - 6:00pm
- Breakfast at 8:30 - 9:00am
- Lunch at 11:00 - 11:45am
- Snack at 3:15 - 3:45pm

### EVENTS

- Wednesday - Snow Cones. Bring \$3 - \$5
- Friday - Field Trip to the NFM Community Pool. Please bring a towel, sunscreen, swimsuit, and money for ice cream if you plan to purchase.

### GUEST SPEAKERS

- Tuesday - CPR Class
- Thursday - Solid Waste

### REMINDERS

- Wednesday - Remember to bring cash for snow cones. \$3 or more to get what you would like.
- Friday: We will be going to the pool.

### CAMPER SIGN-IN/OUT POLICY

A parent or guardian is required to sign in and sign out each camper daily. Only people who have previously been listed on the Supplemental Information Sheet will be permitted to sign for your child at pick up. Photo ID will be required. Changes must be submitted in writing.





# NFM MIDDLE SCHOOL CAMP WEEK 3

## IMPORTANT ANNOUNCEMENTS & REMINDERS

Snow Cones on Wednesday (Bring \$3 - \$5)

Kayaking Trip on Thursday (Bring a lunch)

No Camp on Friday July 4<sup>th</sup>

**Monday  
June 30th**

≡Welcome≡

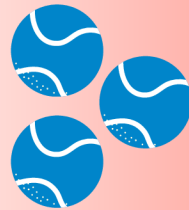


**Tuesday  
July 1st**

Animal Services  
Presentation



Minute to win it  
Battle



**Wednesday  
July 2nd**

Soccer Battle  
5 v 5



Snow Cones  
@12:30 p.m.



**Thursday  
July 3rd**

Kayaking  
at Manatee Park



Van leaves 9 a.m.  
Van returns 3 p.m.

**Friday  
July 4th**



No Camp

- **Camp Hours** 7:30 a.m. - 6 p.m.
- Have questions? Refer to the "How to have a Perfect Week at Camp" document.
- Calendars are subject to change



**CAMP DIRECTOR:**

Ryan Vance | [Rvance@leegov.com](mailto:Rvance@leegov.com)

**NFM RECREATION CENTER:**

239-533-7200

# PERFECT WEEK AT NFM MIDDLE SCHOOL CAMP

## MIDDLE SCHOOL CAMP WEEK 3

### CAMPER DAILY'S

- Breakfast and lunch are provided by the school district otherwise you can pack a lunch.
- Snacks are not provided. Please pack & bring snacks for snack time.
- Bring a sealed and refillable water bottle to stay hydrated.
- Do NOT bring electronics or other toys from home.
- Wear closed toe shoes and dress comfortably.

### OTHER NOTES

- Friday: No Camp. Have a safe and enjoyable 4<sup>th</sup> of July.

### CAMP HOURS

- Open at 7:30am - 6:00pm
- Breakfast at 8:30 - 9:00am
- Lunch at 11:00 - 11:45am
- Snack at 3:15 - 3:45pm

### EVENTS

- Wednesday - Snow Cones. Bring \$3 - \$5
- Thursday - Field Trip to Manatee Park. Lunch will not be provided this day. Please bring your own lunch, sunscreen, towel, and bathing suit.

### GUEST SPEAKERS

- Tuesday - Animal Services Presentation

### REMINDERS

- Wednesday - Remember to bring cash for snow cones. \$3 or more to get what you would like.
- Thursday: Lunch will not be provided. Please bring a lunch.

### CAMPER SIGN-IN/OUT POLICY

A parent or guardian is required to sign in and sign out each camper daily. Only people who have previously been listed on the Supplemental Information Sheet will be permitted to sign for your child at pick up. Photo ID will be required. Changes must be submitted in writing.





# NFM MIDDLE SCHOOL CAMP WEEK 4

## IMPORTANT ANNOUNCEMENTS & REMINDERS

Snow Cones on Wednesday (Bring \$3 - \$5)

Field Trip on Friday (Wear your camp shirt and bring a lunch)

**Monday  
July 7th**

≡Welcome≡



**Tuesday  
July 8th**

Lee Tran  
Activity and Ride  
Group 1



Mr. Eddies  
bracelet making



**Wednesday  
July 9th**

Lee Tran  
Activity and Ride  
Group 2



Snow Cones  
@12:30 p.m.



**Thursday  
July 10th**



LCEC  
Guest Speaker

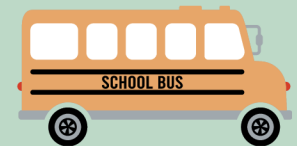


**Friday  
July 11th**



**TOPGOLF**

10 a.m. - Noon  
Bus Leaves @9:30 a.m.  
Bus Returns @1:30 p.m.



- **Camp Hours** 7:30 a.m. - 6 p.m.
- Have questions? Refer to the "How to have a Perfect Week at Camp" document.
- Calendars are subject to change



**CAMP DIRECTOR:**

Ryan Vance | [Rvance@leegov.com](mailto:Rvance@leegov.com)

**NFM RECREATION CENTER:**

239-533-7200

# PERFECT WEEK AT NFM MIDDLE SCHOOL CAMP

## MIDDLE SCHOOL CAMP WEEK 4

### CAMPER DAILY'S

- Breakfast and lunch are provided by the school district otherwise you can pack a lunch.
- Snacks are not provided. Please pack & bring snacks for snack time.
- Bring a sealed and refillable water bottle to stay hydrated.
- Do NOT bring electronics or other toys from home.
- Wear closed toe shoes and dress comfortably.

### OTHER NOTES

- Friday: Campers must wear their camp T-shirt to camp for the field trip.

### CAMP HOURS

- Open at 7:30am - 6:00pm
- Breakfast at 8:30 - 9:00am
- Lunch at 11:00 - 11:45am
- Snack at 3:15 - 3:45pm

### EVENTS

- Wednesday - Snow Cones. Bring \$3 - \$5
- Thursday - Field Trip to Top Golf. A lunch will be provided for this trip. Please bring your own in case you do not like what is offered. Wear your camp shirt on this day.

### GUEST SPEAKERS

- Tuesday - Lee Tran
- Wednesday - Lee Tran
- Thursday - LCEC Program

### REMINDERS

- Wednesday - Remember to bring cash for snow cones. \$3 or more to get what you would like.
- Friday: Wear your camp shirt..

### CAMPER SIGN-IN/OUT POLICY

A parent or guardian is required to sign in and sign out each camper daily. Only people who have previously been listed on the Supplemental Information Sheet will be permitted to sign for your child at pick up. Photo ID will be required. Changes must be submitted in writing.





# NFM MIDDLE SCHOOL CAMP WEEK 5

## IMPORTANT ANNOUNCEMENTS & REMINDERS

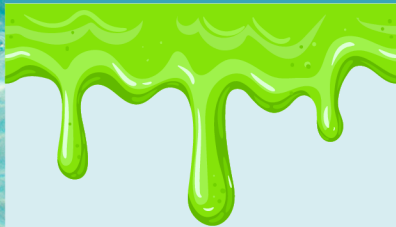
Snow Cones on Wednesday (Bring \$3 - \$5)  
Pool Day on Friday

**Monday  
July 14th**

≡Welcome≡



**Tuesday  
July 15th**



Slime Party  
Library Program  
2 - 3 p.m.



**Wednesday  
July 16th**

Mr. Tyler Fire/  
Scavenger Hunt  
Program



Snow Cones  
@12:30 p.m.



**Thursday  
July 17th**

Ranger Program  
Noon - 2 p.m.



Team Relay Race



**Friday  
July 18th**

Pool Day  
11 a.m. - 1 p.m.



Bring a towel,  
sunscreen, swimsuit,  
and money for ice  
cream.



- **Camp Hours** 7:30 a.m. - 6 p.m.
- Have questions? Refer to the "How to have a Perfect Week at Camp" document.
- Calendars are subject to change



**CAMP DIRECTOR:**

Ryan Vance | [Rvance@leegov.com](mailto:Rvance@leegov.com)

**NFM RECREATION CENTER:**

239-533-7200

# PERFECT WEEK AT NFM MIDDLE SCHOOL CAMP

## MIDDLE SCHOOL CAMP WEEK 5

### CAMPER DAILY'S

- Breakfast and lunch are provided by the school district otherwise you can pack a lunch.
- Snacks are not provided. Please pack & bring snacks for snack time.
- Bring a sealed and refillable water bottle to stay hydrated.
- Do NOT bring electronics or other toys from home.
- Wear closed toe shoes and dress comfortably.

### CAMP HOURS

- Open at 7:30am - 6:00pm
- Breakfast at 8:30 - 9:00am
- Lunch at 11:00 - 11:45am
- Snack at 3:15 - 3:45pm

### EVENTS

- Wednesday - Snow Cones. Bring \$3 - \$5
- Friday - Field Trip to the NFM Community Pool. Please bring a towel, sunscreen, swimsuit, and money for ice cream if you plan to purchase.

### GUEST SPEAKERS

- Tuesday - Library Program
- Wednesday - Fire Program
- Thursday - Ranger Program

### REMINDERS

- Wednesday - Remember to bring cash for snow cones. \$3 or more to get what you would like.
- Friday: We will be going to the pool.



### CAMPER SIGN-IN/OUT POLICY

A parent or guardian is required to sign in and sign out each camper daily. Only people who have previously been listed on the Supplemental Information Sheet will be permitted to sign for your child at pick up. Photo ID will be required. Changes must be submitted in writing.



# NFM MIDDLE SCHOOL CAMP WEEK 6

## IMPORTANT ANNOUNCEMENTS & REMINDERS

Snow Cones on Wednesday (Bring \$3 - \$5)  
Camp vs Camp on Friday (Wear your camp shirt and bring a lunch)

Monday  
July 21st

≡Welcome≡



Tuesday  
July 22nd

Golisano  
Children's  
Hospital  
9:45 - 10:30 a.m.



Beach Towel  
Volleyball



BRING A BEACH  
TOWEL!

Wednesday  
July 23rd

Internet Safety  
9:45 - 10:30 a.m.

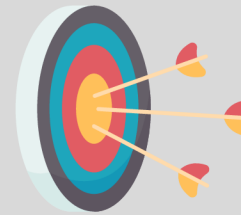


Snow Cones  
@12:30 p.m.

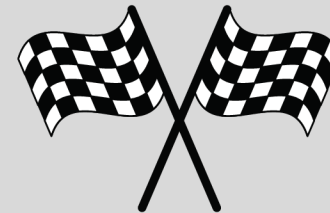


Thursday  
July 24th

Archery  
1 - 3 p.m.



Mario Kart  
Tournament

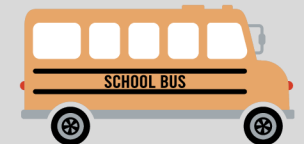


Friday  
July 25th

Camp Battle



Veterans Park



- **Camp Hours** 7:30 a.m. - 6 p.m.
- Have questions? Refer to the "How to have a Perfect Week at Camp" document.
- Calendars are subject to change



### CAMP DIRECTOR:

Ryan Vance | [Rvance@leegov.com](mailto:Rvance@leegov.com)

### NFM RECREATION CENTER:

239-533-7200

# PERFECT WEEK AT NFM MIDDLE SCHOOL CAMP

## MIDDLE SCHOOL CAMP WEEK 6

### CAMPER DAILY'S

- Breakfast and lunch are provided by the school district otherwise you can pack a lunch.
- Snacks are not provided. Please pack & bring snacks for snack time.
- Bring a sealed and refillable water bottle to stay hydrated.
- Do NOT bring electronics or other toys from home.
- Wear closed toe shoes and dress comfortably.

### CAMP HOURS

- Open at 7:30am - 6:00pm
- Breakfast at 8:30 - 9:00am
- Lunch at 11:00 - 11:45am
- Snack at 3:15 - 3:45pm

### GUEST SPEAKERS

- Tuesday - Golisano Children's Hospital
- Wednesday - Internet Safety
- Thursday - Archery Program

### EVENTS

- Wednesday - Snow Cones. Bring \$3 - \$5
- Friday - Field Trip to Veterans Park Recreation Center for our yearly Camp vs Camp Battle! Please bring a lunch and wear red on this day.

### REMINDERS

- Wednesday - Remember to bring cash for snow cones. \$3 or more to get what you would like.
- Friday: Wear red and bring a lunch for our Camp vs Camp Battle.

### CAMPER SIGN-IN/OUT POLICY

A parent or guardian is required to sign in and sign out each camper daily. Only people who have previously been listed on the Supplemental Information Sheet will be permitted to sign for your child at pick up. Photo ID will be required. Changes must be submitted in writing.





# NFM MIDDLE SCHOOL CAMP WEEK 7

## IMPORTANT ANNOUNCEMENTS & REMINDERS

Snow Cones on Wednesday (Bring \$3 - \$5)  
Last Day of Camp on Friday

**Monday  
July 28th**

≡Welcome≡



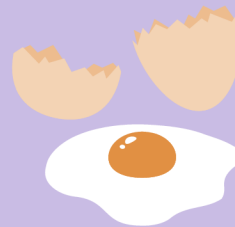
**Tuesday  
July 29th**

Pep rally signs  
and group chant



**Wednesday  
July 30th**

Egg Drop  
Contest



Snow Cones  
@12:30 p.m.

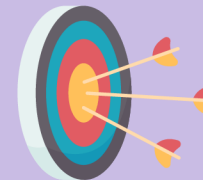


**Thursday  
July 31st**

Lee County  
Elections



Archery  
1 - 3 p.m.



**Friday  
August 1st**

PEP  
Rally



- **Camp Hours** 7:30 a.m. - 6 p.m.
- Have questions? Refer to the "How to have a Perfect Week at Camp" document.
- Calendars are subject to change



### CAMP DIRECTOR:

Ryan Vance | [Rvance@leegov.com](mailto:Rvance@leegov.com)

### NFM RECREATION CENTER:

239-533-7200

# PERFECT WEEK AT NFM MIDDLE SCHOOL CAMP

## MIDDLE SCHOOL CAMP WEEK 7

### CAMPER DAILY'S

- Breakfast and lunch are provided by the school district otherwise you can pack a lunch.
- Snacks are not provided. Please pack & bring snacks for snack time.
- Bring a sealed and refillable water bottle to stay hydrated.
- Do NOT bring electronics or other toys from home.
- Wear closed toe shoes and dress comfortably.

### CAMP HOURS

- Open at 7:30am - 6:00pm
- Breakfast at 8:30 - 9:00am
- Lunch at 11:00 - 11:45am
- Snack at 3:15 - 3:45pm

### EVENTS

- Wednesday - Snow Cones. Bring \$3 - \$5
- Friday - Pep Rally for last day of camp! Wear something fun and get ready to show why middle School is the best!

### GUEST SPEAKERS

- Thursday - Lee County Elections and Archery Program

### REMINDERS

- Wednesday - Remember to bring cash for snow cones. \$3 or more to get what you would like.
- Friday: Last day of camp.



### CAMPER SIGN-IN/OUT POLICY

A parent or guardian is required to sign in and sign out each camper daily. Only people who have previously been listed on the Supplemental Information Sheet will be permitted to sign for your child at pick up. Photo ID will be required. Changes must be submitted in writing.