

ESTERO MIDDLE SCHOOL CAMP WEEK 1

IMPORTANT ANNOUNCEMENTS & REMINDERS

Don't forget your bagged lunch, snack, and sunscreen. Closed-toed shoes are required. No crocs (except pool days)!
Please ensure you arrive early for our tour days. Vans will leave 30 minutes before stated tour time!

**Monday
June 16**

**WGCU Tour
Group 1
10-11:30 a.m.**



**2:30 p.m.
Southern Snoballs
\$3 & \$4 cash only**



**Tuesday
June 17**

Arts & Crafts



Scavenger Hunt

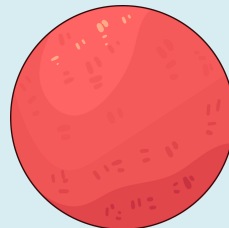


**Wednesday
June 18**

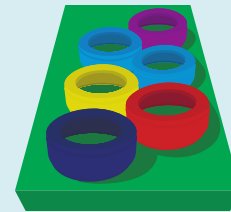
**WGCU Tour
Group 2
10-11:30 a.m.**



Dodgeball



**Thursday
June 19**



Obstacle Course Day



**Friday
June 20**



**11 a.m.-2:30 p.m.
San Carlos Pool
Bring your bathing
suit and towel**

\$1 cash for Ice Cream

- **Camp Hours** 7:30 a.m.-6 p.m.
- Have questions? Refer to the "How to have a Perfect Week at Camp" document.
- Calendars are subject to change.



CAMP DIRECTOR:
Josh Remland | Jremland@leegov.com
ESTERO RECREATION CENTER & MS CAMP:
(239) 533-1470 | (239) 264-9933

PERFECT WEEK AT ERC MIDDLE SCHOOL CAMP

MIDDLE SCHOOL CAMP WEEK 1

CAMPER DAILY'S

- Bring your bagged lunch and afternoon snack.
- Don't forget your sunscreen, closed toe-shoes, and water bottle.
- No phones or smart watches.

GUARDIAN DAILY'S

- Make sure to bring your I.D for check out.
- Check you email for important messages or changes to the schedule.

CAMP HOURS

- Camp hours - 7:30 - 6:00 p.m.
- Lunch is mid day and snack is in the early afternoon.

SPECIAL EVENTS

- **WGCU Tour**
 - Group 1 - Monday - 10 - 11:30 a.m.
 - Group 2 - Wednesday - 10 - 11:30 a.m.
- **Southern SnoBalls**
 - Monday - 2:30 p.m. - Cash only
- **San Carlos Pool**
 - Bring bathing suit, towel and change of clothes - Friday - 11 - 2:30 p.m.
 - Bring cash for ice cream!

GUEST SPEAKERS

- n/a

REMINDERS

- Check lost and found any missing items.
- Email Jremland@leegov.com for any questions!



CAMPER SIGN-IN/OUT POLICY

A parent or guardian is required to sign in and sign out each camper daily. Only people who have previously been listed on the Supplemental Information Sheet will be permitted to sign for your child at pick up. Photo ID will be required. Changes must be submitted in writing.

ESTERO MIDDLE SCHOOL CAMP WEEK 2

IMPORTANT ANNOUNCEMENTS & REMINDERS

Don't forget your bagged lunch, snack, and sunscreen. Closed-toed shoes are required. No crocs (except pool days)!
Please ensure you arrive early for our tour days. Vans will leave 30 minutes before stated tour time!

**Monday
June 23**



**Calusa Planetarium &
Nature Center tour
10 a.m.-1 p.m.**

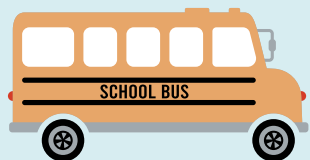


**2:30 p.m.
Southern Snoballs
\$3 & \$4 cash only**

**Tuesday
June 24**



**Field Day at Wa-Ke
Hatchee
10 a.m.-Noon**



**Wednesday
June 25**



**Calusa Planetarium &
Nature Center tour
10 a.m.-1 p.m.**



**Thursday
June 26**



**4-H Activities
10-11:30 a.m.
Create your own
Jersey**



Bring a white T-shirt!

**Friday
June 27**

**Estero Fire Rescue Tour
Group 1: 9:30-10:30 a.m.**



**11 a.m.-2:30 p.m.
San Carlos Pool
Bring your bathing suit
and towel
\$1 cash for Ice Cream**

- **Camp Hours** 7:30 a.m.-6 p.m.
- Have questions? Refer to the "How to have a Perfect Week at Camp" document.
- Calendars are subject to change.



CAMP DIRECTOR:
Josh Remland | Jremland@leegov.com
ESTERO RECREATION CENTER & MS CAMP:
(239) 533-1470 | (239) 264-9933

PERFECT WEEK AT ERC MIDDLE SCHOOL CAMP

MIDDLE SCHOOL CAMP WEEK 2

CAMPER DAILY'S

- Bring your bagged lunch and afternoon snack.
- Don't forget your sunscreen, closed toe-shoes, and water bottle.
- No phones or smart watches.

GUARDIAN DAILY'S

- Make sure to bring your I.D for check out.
- Check you email for important messages or changes to the schedule.

CAMP HOURS

- Camp hours - 7:30 - 6:00 p.m.
- Lunch is mid day and snack is in the early afternoon.

SPECIAL EVENTS

- **Calusa Planetarium and Nature Center Tour**
 - Group 1 - Monday - 10 - 1:00 p.m.
 - Group 2 - Wednesday 10 - 1:00 p.m.
- **Southern SnoBalls**
 - Monday - 2:30 p.m. - Cash Only
- **Field Trip Day at Wa-Ke Hatchee**
 - Both Groups - 10 - Noon
- **Estero Fire Rescue Tour**
 - Group 1 - 9:30 - 10:30 a.m.
- **Create your own Jersey Day**
 - Bring a blank white T-Shirt
- **San Carlos Pool**
 - Bring bathing suit, towel and change of clothes - Friday - 11 - 2:30 p.m.
 - Bring cash for ice cream!

GUEST SPEAKERS

- **4-H Activities and Speaker**
 - 10 - 11:30 a.m.

REMINDERS

- **Bring your blank white T-Shirt for jersey creation day!**
- Check lost and found any missing items.
- Email Jremland@leegov.com for any questions!



CAMPER SIGN-IN/OUT POLICY

A parent or guardian is required to sign in and sign out each camper daily. Only people who have previously been listed on the Supplemental Information Sheet will be permitted to sign for your child at pick up. Photo ID will be required. Changes must be submitted in writing.

ESTERO MIDDLE SCHOOL CAMP WEEK 3

IMPORTANT ANNOUNCEMENTS & REMINDERS

Don't forget your bagged lunch, snack, and sunscreen. Closed-toed shoes are required. No crocs (except for pool)! Please ensure you arrive early for our trip/tour days. Vans will leave 30 minutes before stated tour time!

**Monday
June 30**



**Kayaking @ Manatee
Park
Group 1
9:30 a.m.-Noon**



**2:30 p.m.
Southern Snoballs
\$3 & \$4 cash only**

**Tuesday
July 1**



**Lee Health: Energy
Drinks
10 a.m.-Noon**



Football Challenge

**Wednesday
July 2**

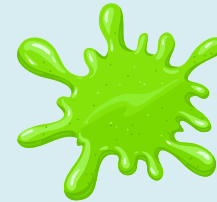


**Kayaking @ Manatee
Park
Group 2
9:30 a.m.-Noon**

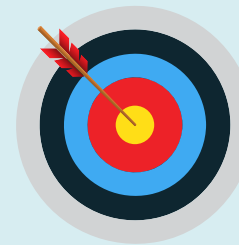


**Thursday
July 3**

**Slime Day!
Bring a spare
shirt!**



**Archery
Group 1
1-3 p.m.**



**Friday
July 4**

No camp!



- **Camp Hours** 7:30 a.m.-6 p.m.
- Have questions? Refer to the "How to have a Perfect Week at Camp" document.
- Calendars are subject to change.



CAMP DIRECTOR:
Josh Remland | Jremland@leegov.com
ESTERO RECREATION CENTER & MS CAMP:
(239) 533-1470 | (239) 264-9933

PERFECT WEEK AT ERC MIDDLE SCHOOL CAMP

MIDDLE SCHOOL CAMP WEEK 3

CAMPER DAILY'S

- Bring your bagged lunch and afternoon snack.
- Don't forget your sunscreen, closed toe-shoes, and water bottle.
- No phones or smart watches.

GUARDIAN DAILY'S

- Make sure to bring your I.D for check out.
- Check you email for important messages or changes to the schedule.

CAMP HOURS

- Camp hours - 7:30 - 6:00 p.m.
- Lunch is mid day and snack is in the early afternoon.
- **NO CAMP ON FRIDAY, JULY 4TH FOR THE HOLIDAY**

SPECIAL EVENTS

- **Kayaking at Manatee Park**
 - Group 1 - Monday - 9:30 - Noon
 - Group 2 - Wednesday - 9:30 - Noon
- **Archery at Estero**
 - Group 1 - Thursday - 1 - 3 p.m.
- **Slime Day**
 - Thursday
 - Bring an extra shirt/shorts that you don't mind getting dirty!
- **Southern SnoBalls**
 - Monday - 2:30 p.m. - Cash Only

GUEST SPEAKERS

- **Lee Health: Energy Drinks**
 - 10 - Noon

REMINDERS

- **Bring your clothes that you don't mind getting dirty for slime day!**
- Check lost and found any missing items.
- Email Jremland@leegov.com for any questions!

CAMPER SIGN-IN/OUT POLICY

A parent or guardian is required to sign in and sign out each camper daily. Only people who have previously been listed on the Supplemental Information Sheet will be permitted to sign for your child at pick up. Photo ID will be required. Changes must be submitted in writing.



ESTERO MIDDLE SCHOOL CAMP WEEK 4

IMPORTANT ANNOUNCEMENTS & REMINDERS

Don't forget your bagged lunch, snack, and sunscreen. Closed-toed shoes are required. No crocs (except pool days)!
Please ensure you arrive early for our tour days. Vans will leave 30 minutes before stated tour time!

**Monday
July 7**



**EOC Tour
Group 1
10 a.m.-Noon**

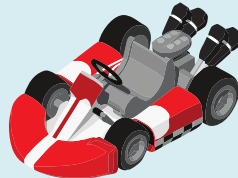


**2:30 p.m.
Southern Snoballs
\$3 & \$4 cash only**

**Tuesday
July 8**



Mario Kart Tournament

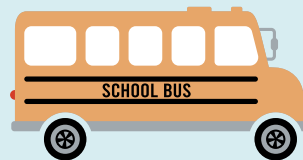


Kickball Tournament

**Wednesday
July 9**



**Skyzone
9 a.m.-12:30 p.m.**



**Thursday
July 10**



Camp Fair



**Friday
July 11**

**Estero Fire Rescue Tour
Group 2: 9:30-10:30 a.m.**



**11 a.m.-2:30 p.m.
San Carlos Pool
Bring your bathing
suit and towel
\$1 cash for Ice Cream**

- **Camp Hours** 7:30 a.m.-6 p.m.
- Have questions? Refer to the "How to have a Perfect Week at Camp" document.
- Calendars are subject to change.



CAMP DIRECTOR:
Josh Remland | Jremland@leegov.com
ESTERO RECREATION CENTER & MS CAMP:
(239) 533-1470 | (239) 264-9933

PERFECT WEEK AT ERC MIDDLE SCHOOL CAMP

MIDDLE SCHOOL CAMP WEEK 4

CAMPER DAILY'S

- Bring your bagged lunch and afternoon snack.
- Don't forget your sunscreen, closed toe-shoes, and water bottle.
- No phones or smart watches.

GUARDIAN DAILY'S

- Make sure to bring your I.D for check out.
- Check you email for important messages or changes to the schedule.

CAMP HOURS

- Camp hours - 7:30 - 6:00 p.m.
- Lunch is mid day and snack is in the early afternoon.

SPECIAL EVENTS

- **EOC Tour**
 - Group 1 - Monday - 10 - Noon
- **Southern SnoBalls**
 - Monday - 2:30 p.m. - Cash Only
- **Skyzone Field Trip**
 - Both Groups - Wednesday - 9:30 - 12:30 p.m.
 - Lunch at Lakes Park - 12:45 - 1:45 p.m.
- **Camp Fair Day**
 - Thursday
- **Estero Fire Rescue Tour**
 - Group 2 - Friday - 9:30 - 10:30 a.m.
- **San Carlos Pool**
 - Bring bathing suit, towel and change of clothes - Friday - 11 - 2:30 p.m.
 - Bring cash for ice cream!

GUEST SPEAKERS

- n/a

REMINDERS

- **Bring cash for snacks at Skyzone/Lakes Park!**
- Check lost and found any missing items.
- Email Jremland@leegov.com for any questions!



CAMPER SIGN-IN/OUT POLICY

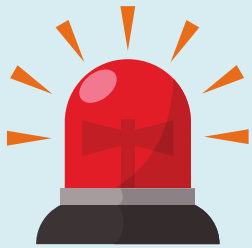
A parent or guardian is required to sign in and sign out each camper daily. Only people who have previously been listed on the Supplemental Information Sheet will be permitted to sign for your child at pick up. Photo ID will be required. Changes must be submitted in writing.

ESTERO MIDDLE SCHOOL CAMP WEEK 5

IMPORTANT ANNOUNCEMENTS & REMINDERS

Don't forget your bagged lunch, snack, and sunscreen. Closed-toed shoes are required. No crocs (except pool days)!
Please ensure you arrive early for our tour days. Vans will leave 30 minutes before stated tour time!

**Monday
July 14**



**EOC Tour
Group 2
10 a.m.-Noon**

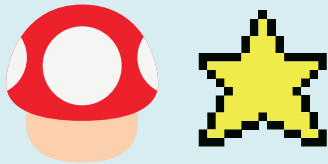


**2:30 p.m.
Southern Snoballs
\$3 & \$4 cash only**

**Tuesday
July 15**



**Lee Health
Emotional
Regulation
10 a.m.-Noon**



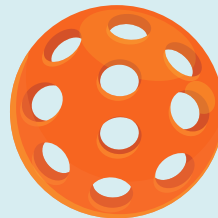
**Smash Bros
Tournament**

**Wednesday
July 16**

**Archery
Group 2
1-3 p.m.**



**Wiffle Ball
Tournament**



**Thursday
July 17**

D1

**D1 Sports Training
11 a.m.-Noon**



Bowling Day

**Friday
July 18**



**11 a.m.-2:30 p.m.
San Carlos Pool
Bring your bathing suit
and towel**

\$1 cash for Ice Cream

- **Camp Hours** 7:30 a.m.-6 p.m.
- Have questions? Refer to the "How to have a Perfect Week at Camp" document.
- Calendars are subject to change.



CAMP DIRECTOR:
Josh Remland | Jremland@leegov.com
ESTERO RECREATION CENTER & MS CAMP:
(239) 533-1470 | (239) 264-9933

PERFECT WEEK AT ERC MIDDLE SCHOOL CAMP

MIDDLE SCHOOL CAMP WEEK 5

CAMPER DAILY'S

- Bring your bagged lunch and afternoon snack.
- Don't forget your sunscreen, closed toe-shoes, and water bottle.
- No phones or smart watches.

GUARDIAN DAILY'S

- Make sure to bring your I.D for check out.
- Check you email for important messages or changes to the schedule.

CAMP HOURS

- Camp hours - 7:30 - 6:00 p.m.
- Lunch is mid day and snack is in the early afternoon.

SPECIAL EVENTS

- **EOC Tour**
 - Group 2 - Monday - 10 - Noon
- **Southern SnoBalls**
 - Monday - 2:30 p.m. - Cash Only
- **Archery at Estero**
 - Group 2 - Wednesday - 1 - 3 p.m.
- **D1 Sports Training**
 - Thursday - 11 - Noon
- **San Carlos Pool**
 - Bring bathing suit, towel and change of clothes - Friday - 11 - 2:30 p.m.
 - Bring cash for ice cream!

GUEST SPEAKERS

- **Lee Health: Emotional Regulation**
 - Tuesday - 10 - Noon

REMINDERS

- Check lost and found any missing items.
- Email Jremland@leegov.com for any questions!



CAMPER SIGN-IN/OUT POLICY

A parent or guardian is required to sign in and sign out each camper daily. Only people who have previously been listed on the Supplemental Information Sheet will be permitted to sign for your child at pick up. Photo ID will be required. Changes must be submitted in writing.

ESTERO MIDDLE SCHOOL CAMP WEEK 6

IMPORTANT ANNOUNCEMENTS & REMINDERS

Don't forget your bagged lunch, snack, and sunscreen. Closed-toed shoes are required. No crocs (except pool days)!
Please ensure you arrive early for our tour days. Vans will leave 30 minutes before stated tour time!

**Monday
July 21**



**Adventures in Paradise
Boat Ride
Group 1
Noon-3 p.m.**



**2:30 p.m.
Southern Snoballs
\$3 & \$4 cash only**

**Tuesday
July 22**



**3 v 3 Basketball
Tournament**

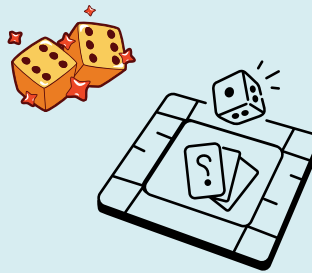
Wear your jerseys!



**Wednesday
July 23**



**Adventures in Paradise
Boat Ride
Group 2
Noon-3 p.m.**



Monopoly Games

**Thursday
July 24**



**Dance Dance
Tournament**



**Summer Camp
Quiz Show**

**Friday
July 25**



**11 a.m.-2:30 p.m.
San Carlos Pool
Bring your bathing suit
and towel**

\$1 cash for Ice Cream

- **Camp Hours** 7:30 a.m.-6 p.m.
- Have questions? Refer to the "How to have a Perfect Week at Camp" document.
- Calendars are subject to change.



CAMP DIRECTOR:
Josh Remland | Jremland@leegov.com
ESTERO RECREATION CENTER & MS CAMP:
(239) 533-1470 | (239) 264-9933

PERFECT WEEK AT ERC MIDDLE SCHOOL CAMP

MIDDLE SCHOOL CAMP WEEK 6

CAMPER DAILY'S

- Bring your bagged lunch and afternoon snack.
- Don't forget your sunscreen, closed toe-shoes, and water bottle.
- No phones or smart watches.

GUARDIAN DAILY'S

- Make sure to bring your I.D for check out.
- Check you email for important messages or changes to the schedule.

CAMP HOURS

- Camp hours - 7:30 - 6:00 p.m.
- Lunch is mid day and snack is in the early afternoon.

SPECIAL EVENTS

- **Adventures in Paradise Boat Ride Trip**
 - Group 1 - Monday - 12 - 3 p.m.
 - Group 2 - Wednesday - 12 - 3 p.m.
 - Sun Harvest - 3:30 - 4 p.m.
- **Southern SnoBalls**
 - Monday - 2:30 p.m. - Cash Only
- **San Carlos Pool**
 - Bring bathing suit, towel and change of clothes - Friday - 11 - 2:30 p.m.
 - Bring cash for ice cream!

GUEST SPEAKERS

- n/a

REMINDERS

- **Bring cash for Sun Harvest snacks!**
- Check lost and found any missing items.
- Email Jremland@leegov.com for any questions!



CAMPER SIGN-IN/OUT POLICY

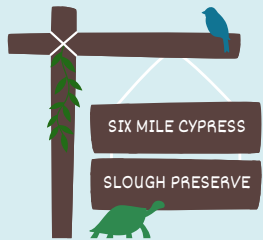
A parent or guardian is required to sign in and sign out each camper daily. Only people who have previously been listed on the Supplemental Information Sheet will be permitted to sign for your child at pick up. Photo ID will be required. Changes must be submitted in writing.

ESTERO MIDDLE SCHOOL CAMP WEEK 7

IMPORTANT ANNOUNCEMENTS & REMINDERS

Don't forget your bagged lunch, snack, and sunscreen. Closed-toed shoes are required. No crocs (except pool days)!
Please ensure you arrive early for our tour days. Vans will leave 30 minutes before stated tour time!

**Monday
July 28**



**6 Mile Slough
9:30-11:30 a.m.
Group 1**



**2:30 p.m.
Southern Snoballs
\$3 & \$4 cash only**

**Tuesday
July 29**



**Lee Health: Alcohol
10 a.m.-Noon**



**Soccer
Tournament**

**Wednesday
July 30**



**6 Mile Slough
9:30-11:30 a.m.
Group 2**

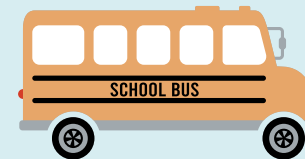


Camp Shirt Signing Day

**Thursday
July 31**



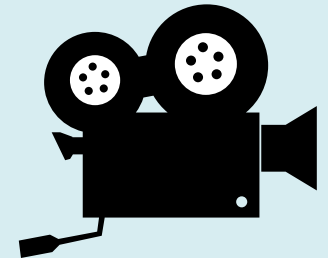
**Sun splash
10 a.m.-4 p.m.**



**Friday
August 1**



**11 a.m.-2:30 p.m.
San Carlos Pool
Bring your bathing
suit and towel
\$1 cash for Ice Cream**



Movie Day

- **Camp Hours** 7:30 a.m.-6 p.m.
- Have questions? Refer to the "How to have a Perfect Week at Camp" document.
- Calendars are subject to change.



CAMP DIRECTOR:
Josh Remland | Jremland@leegov.com
ESTERO RECREATION CENTER & MS CAMP:
(239) 533-1470 | (239) 264-9933

PERFECT WEEK AT ERC MIDDLE SCHOOL CAMP

MIDDLE SCHOOL CAMP WEEK 7

CAMPER DAILY'S

- Bring your bagged lunch and afternoon snack.
- Don't forget your sunscreen, closed toe-shoes, and water bottle.
- No phones or smart watches.

GUARDIAN DAILY'S

- Make sure to bring your I.D for check out.
- Check you email for important messages or changes to the schedule.

CAMP HOURS

- Camp hours - 7:30 - 6:00 p.m.
- Lunch is mid day and snack is in the early afternoon.

SPECIAL EVENTS

- **6 Mile Slough Preserve**
 - Group 1 - Monday - 9:30 - 11:30 a.m.
 - Group 2 - Wednesday - 9:30 - 11:30 a.m.
- **Southern SnoBalls**
 - Monday - 2:30 p.m. - Cash Only
- **Camp T-Shirt/Jersey Signing Day**
 - Wednesday
- **Sun Splash Field Trip**
 - Thursday - 10 - 4 p.m.
- **San Carlos Pool**
 - Bring bathing suit, towel and change of clothes - Friday - 11 - 2:30 p.m.
 - Bring cash for ice cream!

GUEST SPEAKERS

- **Lee Health: Alcohol**
 - Tuesday - 10 - Noon

REMINDERS

- **Bring cash for Sun Splash snacks!**
- Check lost and found any missing items.
- Email Jremland@leegov.com for any questions!



CAMPER SIGN-IN/OUT POLICY

A parent or guardian is required to sign in and sign out each camper daily. Only people who have previously been listed on the Supplemental Information Sheet will be permitted to sign for your child at pick up. Photo ID will be required. Changes must be submitted in writing.